

D3024 series

D3024 High Speed Micro Centrifuge

Unique Features

- Special multi-flow air cooling design with patent ensures fast cooling of the rotor and low energy consumption
- Unique temperature display appropriate for gentle handling of sensitive samples
- Bio-safe rotor/anti-sample overflow prevents accidental leakage in centrifugal process allowing risk-free microbial contamination
- High strength aluminum alloy rotor can be fully autoclaved for unlimited service life
- Four rotors are optional complete with 24 places 1.5/2.0mL tubes, bigger 5.0mL, smaller 0.2mL and 0.5mL tubes with the use of adapters



Brushless DC motor



Wide range of rotors

Specifications

	D3024	D3024R
Max. Speed	15000rpm (200~15000rpm), increment:10rpm	15000rpm (200~15000rpm), increment:10rpm
Max. RCF	21380xg, increment:10xg	21380xg, increment: 10xg
Speed Accuracy	±20 rpm	±20 rpm
Temperature Range	-	-20°C~40°C
Rotor Capacity	5mLx18, 0.2mL/0.5mL/1.5mL/ 2mLx24, 0.5mLx36, PCR8x4	5mLx18, 0.2mL/0.5mL/1.5mL/ 2mLx24, 0.5mLx36, PCR8x4
Run Time	30sec~99min / Continuous	30sec~99min / Continuous
Motor	Brushless DC motor	Brushless DC motor
Safety Devices	Dual door interlock, Over-speed detection, Over-temperature detection, Automatic internal diagnosis	Dual door interlock, Over-speed detection, Over-temperature detection, Automatic internal diagnosis
Power	Single-phase, AC220V~240V, 50Hz/60Hz, 5A, AC110V~120V, 50Hz/60Hz, 8A 200W	Single-phase, AC220V~240V, 50Hz/60Hz, 10A, AC110V~120V, 50Hz/60Hz, 10A 400W
Acceleration /Braking time [Sec]	25s ↑ 25s ↓	25s ↑ 25s ↓
Dimension [WxDxH]	280x364x266mm	338x580x324mm
Weight	12kg	30kg
Certification	CE cTUVus FCC MCA	CE cTUVus FCC MCA
Advanced features	Speed/RCF switch; Short-time run function; sound-alert function	Speed/RCF switch; Short-time run function; sound-alert function

D3024R High Speed Refrigerated Micro Centrifuge

Powerful cooling system for precise temperature control

- Pre-cooling program ensures optimal protection of the sample before warming
- Guaranteed 2°C cooling within only 7 minutes for both chamber and samples even at maximum speed and capacity utilization
- Sound-alert allows your undivided attention on other tasks warming
- Locked lid after operation maintains the chamber temperature
- Intermittent temperature control mode, CFC-free refrigerant and low carbon life rotor capacity
- Bio-safe rotor/anti-sample overflow prevents accidental leakage in centrifugal process allowing risk-free microbial contamination
- High strength aluminum alloy rotor can be fully autoclaved for unlimited service life
- Four rotors are optional complete with 24 place 1.5/2.0mL tubes, bigger 5.0mL, smaller 0.2mL and 0.5mL tubes with the use of adapters
- Quiet running, noise level ≤ 54dB





DLAB rotors are manufactured military-industrial-grade aluminum alloy with high mechanical strength for precise running and safety (excludes D2012 plus rotor)

- Every rotor can reach a Max. speed of 15000rpm
- Rotors are seated on a tapered shaft, concentric and self-aligning, perfect for achieving running stability at high speeds
- D3024 & D3024R with bio-safe rotors/anti-sample overflow prevents accidental leakage in centrifugal process allowing risk-free microbial contamination. D3024 & D3024R rotors have passed MCA test according to IEC/EN61010-2-20, including explosion-proof and bio-safe tests
- High strength aluminum alloy rotors are fully autoclavable and provide unlimited service life (D2012 plus rotor not included)
- Powerful cooling system minimizes rotor heating. D3024 rotors heat up less than 10°C and D2012 rotors less than 8°C after running an hour

Rotor Features

Fully autoclavable

High strength aluminum alloy rotors are fully autoclavable, withstanding steam sterilizing at 121°C for 20 minutes, Unlimited service life is a reality.

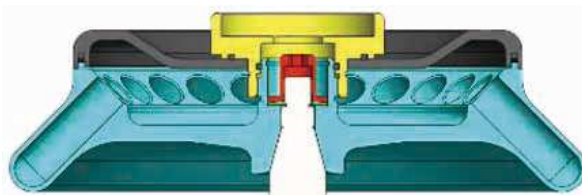
Bio-safe

Aspired to be the top-of-the-line model, D3024 & D3024R rotors are designed to prevent sample leakage. Each and every rotor is hermetically sealed by three rubber seals.

Explosion-proof

DLAB centrifuges are checked under MCA conditions according to IEC / EN61010-2-20, causing disruption by partially cutting and overloading rotor assembly, and guarantee that no any part shall be detached to cause danger to person or the environment.

Three rubber seals fitted to achieve bio-safe condition



Seals within the aluminum alloy rotor



D3024 series | Rotors and Adapters

Available rotors



AS24-2 for D3024 & D3024R

Cat. No. 19400006

Max. speed :15000rpm
Max. RCF:21380xg
Rotor capacity:2mL/1.5mLx24,0.2mLx24,0.5mLx24
Rotor material:Aluminum alloy
Bio-safe(Bio sealing):YES
Available rotor adapters:A02P2,A05P2



AS12-5V for D3024 & D3024R

Cat. No. 19400032

Max. speed :15000rpm
Max. RCF:21380xg
Rotor capacity:5mLx12(culture tube)
Rotor material:Aluminum alloy
Bio-safe(Bio sealing):YES



AS36-05 for D3024 & D3024R

Cat. No. 19400007

Max. speed :15000rpm
Max. RCF:21380xg
Rotor capacity:0.5mLx36,0.2mLx36
Rotor material:Aluminum alloy
Bio-safe(Bio sealing):YES
Available rotor adapters:A02P05



AS4-PCR8 for D3024 & D3024R

Cat. No. 19400008

Max. speed :15000rpm
Max. RCF:21380xg
Rotor capacity:0.2mL/PCR8x4
Rotor material:Aluminum alloy
Bio-safe(Bio sealing):YES



AS18-5
for D3024 & D3024R

Cat. No. 19400012

Max. speed :15000rpm
Max. RCF:21380xg
Rotor capacity:5mLx18
Rotor material:Aluminum alloy
Bio-safe(Bio sealing):YES

Available adapters



A02P2

Cat. No. 19500001

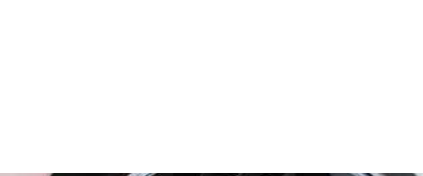
0.2mL rotor adapter
Used with A12-2, A12-2P, AS24-2 and A24-2P rotors
24pcs/pk



A05P2

Cat. No. 19500002

0.5mL rotor adapter
Used with A12-2, A12-2P, AS24-2 and A24-2P rotors
24pcs/pk



A02P05

Cat. No. 19500003

0.2mL rotor adapter
Used with AS36-05 rotor
36pcs/pk



D2012 plus
High Speed Mini Centrifuge

Features

- Powerful centrifugal force 15100xg and Max speed 15000rpm ideal for various applications
- Brushless DC motor drive quickly accelerates the rotor to the set speed
- Quiet working, Low noise ≤56dB
- D2012 is proven by IEC/EN 61010-1
- D2012 Plus passed the rigorous explosion-proof test and accredited with CE, cTUVus, FCC certificates, and MCA test. MCA test according to IEC/EN61010-2-20



Brushless DC motor



LCD display



CE cTUVus FCC

Specifications

	D2012 plus
Max. Speed	15000rpm (500~15000rpm), increment:100rpm
Max. RCF	15100xg, increment:100xg
Speed Accuracy	±20 rpm
Rotor Capacity	0.2mL/0.5mL/1.5mL/ 2mLx12
Run Time	30sec~99min / Continuous
Driving Motor	Brushless DC motor
Safety Devices	Door interlock, Over-speed detection, Over-temperature detection, Automatic internal diagnosis
Power	Single-phase, AC110V~240V, 50Hz/60Hz, 3A 100W
Noise level	≤54dB
Acceleration /Braking time	11s ↑ /9s ↓
Dimension [DxWxH]	255x245x140mm
Weight	6kg
Certification	EMC, CE, FCC, ICES, cTUVus, CB
Advanced features	Speed/RCF switch, Short-time run function, sound-alert function

