

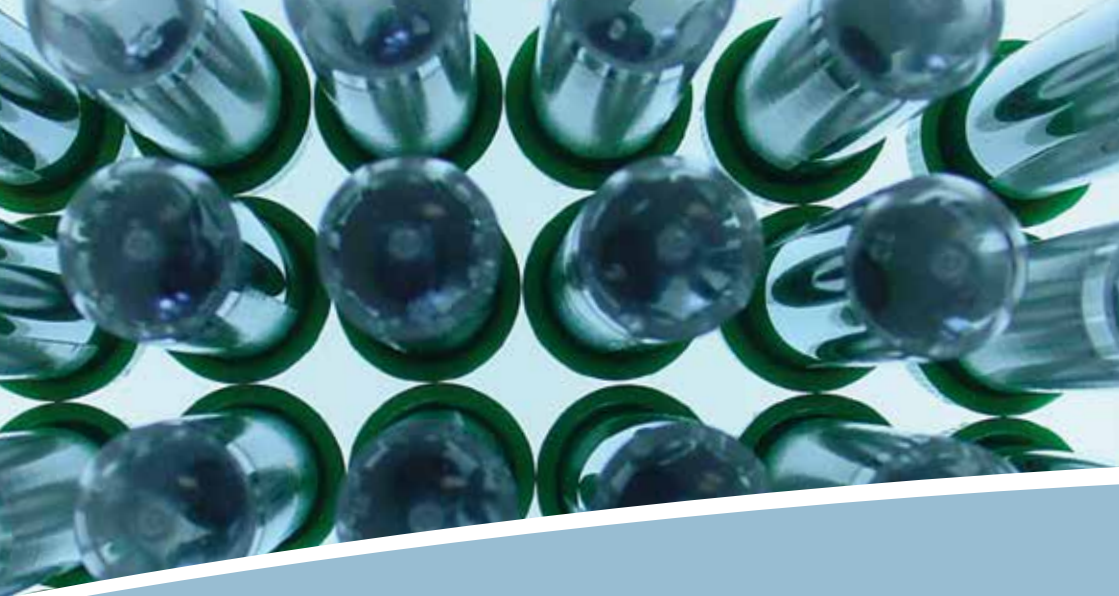
PrO-Hospital Centrifuges

Hospital. Clinical. GP. Laboratories



Now including
our cytology
& cell washer
centrifuges

CENTURION
SCIENTIFIC LIMITED



Head Office

The Old Stables
Church Farm
Stoughton
Chichester
West Sussex
PO18 9JL
United Kingdom.

Office 2 (Research & Service)

The Old Equine Barn, Church Farm,
Stoughton, Chichester. PO18 9JL.

Factory 1

(Ambient Manufacturing)

The Old Grain Barn, Church Farm,
Stoughton, Chichester, PO18 9JL.

Factory 2

(Refrigeration Manufacturing)

The Old Drier Barn, Church Farm,
Stoughton, Chichester, PO18 9JL.

Factory 3 (Logistics)

The Old Storage Barn, Church Farm,
Stoughton, Chichester, PO18 9JL.

**Call us on: Tel +44(0)2392 631225
or email**

General: info@centurionscientific.co.uk

Sales: sales@centurionscientific.co.uk

www.centurionscientificglobal.com

Follow Centurion Scientific on social media



PrO-Hospital Centrifuges

Built to last, these Centrifuges have strong construction yet offer a sleek modern design that will fit into any modern laboratory.

No compromises on quality, only the best components are used in the manufacturing process.

By working with all of our suppliers, our reliability has been retained and improved to give all of our range a 3 year warranty as standard.



CE marked and ISO 9001 regulated and now IVD certified too

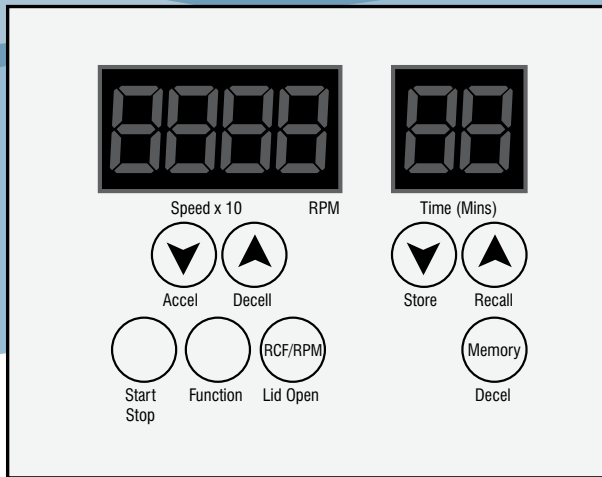
| User features to PrO-Hospital series | Advantages |
|--|---------------------------------------|
| Bright blue LED display | Clarity & ease of use |
| Rotor recognition | Safe selection of rotors |
| 10 acceleration rates & 10 deceleration rates | Sample assistance |
| 10 program memory | Multi department & Users |
| Timer 0-99 minutes & Hold in 30 second increments | Total flexibility |
| Pulse short run | Fast pelleting |
| Run in speed (rpm) or rcf (G) in 10 rpm increments | Accuracy |
| Orientation acceleration rate | Prevents initial sample side deposits |
| Sound <60db (rotor dependent) | Quiet |

| Standard to PrO-Hospital series | Advantages |
|---|--------------------------------|
| Extra thick stainless steel bowl | Easy clean & rust free |
| Port to lid | Tachometer speed certification |
| Alloy & steel frame (zinc coated) | Strong light & quiet |
| World leading industrial grade inverter | Reliability & strength |
| Best quality European brushless motor | Quiet, cool & reliable |
| High technology airflow (ambient mode) | Cooler running |

All centrifuges have user accessible service sections to access all safety parameters

| Safety features to PrO-Hospital series | Advantages |
|--|--------------------------------|
| Multi point lid locking | Lid safety |
| Emergency lid release | Power failure release |
| Lid Spring Strut | Lid dropping safety |
| Lid lock detection | To run, lid must be shut |
| Imbalance detection | Eradicates user loading errors |
| Overspeed sensor | Safe detection of speed |
| Set inverter values | Electronic safety of speed |
| Barrier ring | Safety protection of chamber |
| Motor overheat sensor | Safe motor protection |

Centurion Scientific Ltd Centrifuges comply to all relevant EU standards of quality and medical devices IEC 61010 and CE conformity test marks emission, immunity to EN/IEC 61326-1, Class B



New Ranges

New Dual Centrifuges All available with dual rotors

Micro Centrifuges
Small Centrifuges

New Prime Centrifuges All available with multiple rotors

Micro Centrifuges
Small Centrifuges
Medium Centrifuges
Large Centrifuges
Large Centrifuges with Trolley
Floor Standing Centrifuges

New Large Centrifuges (available with trolley)

Bench top, or with the addition of a Centurion trolley, can be converted to a free standing unit and will also sit under a bench as only 71cm high.

New Floor Standing Centrifuges

Complete floor standing units – free standing or will fit under a bench as only 71cm high.

Ranges Available

Micro: Capacity to 120ml max

Pages: 6 to 11

Dual: Simple 2 rotor Centrifuge
Prime: Multiple rotors Centrifuge

Micros, Haematocrit, Fixed angle
Swing out

Small: Capacity to 400ml max

Pages: 12 to 19

Dual: Simple 2 rotor Centrifuge
Prime: Multiple rotors Centrifuge

Micros, Haematocrit, Fixed angle
Swing out, Cytology

Medium: Capacity to 1000ml max

Pages: 20 to 28
(Ambient & Refrigerated)

Dual: Simple 2 rotor Centrifuge
Prime: Multiple rotors Centrifuge

Micros, Haematocrit, Fixed angle
Swing out, Cytology

Large & Large with Trolley
Capacity 2-3000ml max

Pages: 29 to 40
(Ambient & Refrigerated)

Prime: Multiple rotor Centrifuge

Micros, Haematocrit, Fixed angle
Swing out

Floor Standing
Capacity 3-4000ml max

Pages: 41 to 59
(Ambient & Refrigerated)

Prime: Multiple rotors Centrifuge

Micros, Haematocrit, Fixed angle
Swing out, Blood bags (Coming soon)

Cytology

Pages: 60 to 67

Cell Washer

Pages: 68 to 71



Display indicative only

Serum Micro Dual Centrifuge

Serum. (230V 50/60Hz), 1.Serum (110V 60Hz)

| | |
|-------------|---------------------------------|
| Speed max | 500-8,000 Rpm (10 Rpm steps) |
| Rcf max | 6100 G |
| Timer | 0-99 Mins & Hold (30 sec steps) |
| Dims HWD | 235 x 235 x 350mm |
| Weight | 12.8Kg (without rotor) |
| Power | 140 watts |
| Memory | 10 programs |
| Accel Rates | 10 programs |
| Decel Rates | 10 programs |

Fixed Angle Rotor to 15ml

Swing Out

Including 8 buckets



| Rotor | BRK5407 | BRK5408 | BRK5508S |
|--------------------------|-------------------------|---------------|-------------------|
| Rotor type | 4 x 15ml & 4 x 10ml | 8 x 15ml tube | 8 x 5ml Swing Out |
| Tube size max | 17 x 120mm & 13 x 100mm | 17 x 120mm | 13 x 75mm max |
| Minimum speed Rpm | 500 | 500 | 500 Rpm |
| Maximum speed Rpm | 8,000 | 6,000 | 4000 Rpm |
| Maximum Rcf (G) | 6,100 | 3,500 | 1500 |
| Radius max cms | 8.6 | 8.5 | 8.5 |
| Sample tube angle ° | 30 | 30 | 0 |
| Acceleration time (secs) | 30 | 30 | 20 |
| Deceleration time (secs) | 30 | 30 | 20 |
| Autoclavable (frequency) | 121°C (20) | 121°C (20) | 121°C (20) |

Reducers (Pack of 4)



| Rotor | BRK5408 |
|---------------|-------------|
| Part number | RM05 (5ml) |
| Tube size max | 13 x 80mm |
| Part number | RM10 (10ml) |
| Tube size max | 13 x 100mm |

Welcome to the Future of Micro Prime Centrifuges

In the past, manufacturers have offered limited rotor availability to Micro Centrifuges.

Not anymore.

Centurion Scientific Ltd are evolving the marketplace and have introduced **Micro Centrifuge Prime**.

A Micro that offers:

| | | |
|---|--|----------|
| 1 | Micro rotors. 0.2, 0.4, 0.5, 1.5, 2.0, 2.2ml & PCR 15,000Rpm and 22,000 Rcf (G) max | Capacity |
| 2 | Haematocrit rotor Capillary and 2.0ml tubes 12,000Rpm and 13,500 Rcf(G) max | Capacity |
| 3 | Fixed angle rotors 5, 7.5, 10, 12 & 15ml tube 8,000Rpm and 6,100 Rcf (G) max | Capacity |
| 4 | Swing out rotor 2, 3, 4 & 5ml tube 4,000Rpm and 1,500 Rcf (G) max | Capacity |



Display indicative only

PCV's Micro Prime Centrifuge

PCV's.(230V 50/60Hz). 1.PCV's.(110V 60Hz)

| | |
|-------------|---------------------------------|
| Speed | 500-15,000 Rpm (10 Rpm steps) |
| Rcf Max | 22,000 G |
| Timer | 0-99 Mins & Hold (30 sec steps) |
| Dims HWD | 235 x 235 x 350mm |
| Weight | 12.8 Kg (without rotor) |
| Power | 140 Watts |
| Memory | 10 programs |
| Accel rates | 10 programs |
| Decel rates | 10 programs |

The following pages show available rotors.

Microtube Rotors 15,000 Rpm



With NEW
high Domed
polycarbonate
lid



| Rotor | BRK5424 | BRK5436 | BRK5448 | BRK5494 |
|--------------------------|------------|------------|------------|----------------|
| Rotor type | 24 x 2ml | 36 x 0.5ml | 48 x 0.2ml | 4 x PCR Strips |
| Tube size max | 11 x 50mm | 8 x 30mm | 6 x 40mm | 6 x 40mm |
| Minimum Speed Rpm | 500 | 500 | 500 | 500 |
| Maximum Speed Rpm | 15,000 | 15,000 | 15,000 | 15,000 |
| Maximum Rcf (G) | 22,000 | 22,000 | 22,000 | 22,000 |
| Radius max cms | 8.5 | 8.5 | 8.5 | 8.5 |
| Sample tube angle (°) | 45 | 45 | 45 | 45 |
| Acceleration time (secs) | 25 | 25 | 25 | 25 |
| Deceleration time (secs) | 25 | 25 | 25 | 25 |
| Autoclavable (frequency) | 121°C (10) | 121°C (10) | 121°C (10) | 121°C (10) |

Refrigerated Centrifuges Only

| | | | | |
|---|-----|-----|-----|-----|
| Minimum Temperature | 4°C | 4°C | 4°C | 4°C |
| At maximum speed (relative to room temperature at 23°C) | | | | |

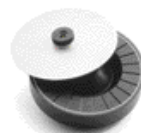
Reducers

(Pack of 24)



| Rotor | BRK5424 |
|---------------|-------------------|
| Part number | RS04 (0.2 -0.4ml) |
| Tube size max | 6 x 30mm |
| Part number | RS05 (0.5ml) |
| Tube size max | 8 x 30mm |

Haematocrit Rotor 12,000 Rpm



| Rotor | BRK5401 |
|--------------------------|---------------------------|
| Rotor type | 24 x capillary & 12 x 2ml |
| Tube size max | 2 x 75mm & 11 x 40mm |
| Minimum Speed Rpm | 500 |
| Maximum Speed Rpm | 12,000 |
| Maximum Rcf (G) | 13,500 |
| Radius max cms | 8.5 |
| Sample tube angle (°) | 0 & 60 |
| Acceleration time (secs) | 30 |
| Deceleration time (secs) | 30 |
| Autoclavable (frequency) | 121°C (10) |

Small Fixed Angle Rotors 6,000 & 8,000 Rpm



| Rotor | BRK5407 | BRK5408 |
|--------------------------|-------------------------|------------|
| Rotor type | 4 x 15ml & 4 x 10ml | 8 x 15ml |
| Tube Size max | 17 x 120mm / 13 x 100mm | 17 x 120mm |
| Minimum speed Rpm | 500 | 500 |
| Maximum speed Rpm | 8,000 | 6,000 |
| Maximum Rcf (G) | 6,100 | 3,400 |
| Radius max cms | 8.6 | 8.5 |
| Sample tube angle (°) | 30 | 30 |
| Acceleration time (secs) | 25 | 25 |
| Deceleration time (secs) | 25 | 25 |
| Autoclavable (frequency) | 121°C (10) | 121°C (10) |

Reducers

(Pack of 4)



| Rotor | BRK407/5408 |
|---------------|-------------|
| Part number | RM05 (5ml) |
| Tube size max | 13 x 80mm |
| Part number | RM10 (10ml) |
| Tube size max | 13 x 100mm |

Swing out Rotor - 8 x 5ml Max



Including 8 buckets

| Rotor | BRK5508S |
|--------------------------|-------------------|
| Rotor type | 8 x 5ml Swing Out |
| Tube size max | 13 x 75mm max |
| Minimum Speed Rpm | 500 Rpm |
| Maximum Speed Rpm | 4,000 Rpm |
| Maximum Rcf (G) | 1500 |
| Radius max cms | 8.5 |
| Sample tube angle (°) | 0 |
| Acceleration time (secs) | 20 |
| Deceleration time (secs) | 20 |
| Autoclavable (frequency) | 121°C (20) |



5ml

Haematocrit (Pvc) accessories



Haematocrit reader

Part Number : 8003



Sealant Clay

(Pack of 10)

Part Number : 8014



Plain Capillary Tubes

(Pack of 1000)

Part Number : 8012



Heperanised Capillary Tubes

(Pack of 1000)

Part Number : 8013



Display indicative only

GP Small Dual Centrifuge

GP.(230V 50/60Hz). 1.GP.(110V 60Hz)

| | |
|-------------|---------------------------------|
| Speed max | 500-4,000 Rpm (10 Rpm steps) |
| Rcf max | 2,200 G |
| Timer | 0-99 Mins & Hold (30 sec steps) |
| Dims HWD | 275 x 325 x 470mm |
| Weight | 21.8Kg (without rotor) |
| Power | 160 watts |
| Memory | 10 programs |
| Accel Rates | 10 programs |
| Decel Rates | 10 programs |

Swing Out Rotor

Adaptors required see page 17

Rotors 4000 Rpm



(Requires 4 buckets B5010)

| Rotor | BRK5324 | BRK5308 | BRK1000 |
|--------------------------|------------|------------|------------|
| Rotor type | 24 x 15ml | 8 x 50ml | 4 x 100ml |
| Tube size max | 17 x 120mm | 30 x 120mm | 45 x 100mm |
| Minimum speed Rpm | 500 | 500 | 500 |
| Maximum speed Rpm | 4,000 | 4,000 | 4,000 |
| Maximum rcf (G) | 2,200 | 2,200 | 2,200 |
| Radius max cms | 12.3 | 12.3 | 12.3 |
| Sample tube angle ° | 30 | 30 | 0 |
| Acceleration time (secs) | 35 | 35 | 25 |
| Deceleration time (secs) | 35 | 35 | 25 |
| Autoclavable (frequency) | 121°C (20) | 121°C (20) | 121°C (20) |

Reducers (Pack of 4)



RM05



RM15



| Rotor | BRK5324 | BRK5308 |
|---------------|-------------|-------------|
| Part number | RM05 (5ml) | RM15 (15ml) |
| Tube size max | 13 x 80mm | 17 x 120mm |
| Part number | RM10 (10ml) | RM25 (25ml) |
| Tube size max | 13 x 100mm | 25 x 100mm |



Display indicative only

GP6 Small Dual Centrifuge

GP6.(230V 50/60Hz). 1.GP6.(110V 60Hz)

| | |
|-------------|---------------------------------|
| Speed max | 500-6,000 Rpm (10 Rpm steps) |
| Rcf max | 3,800 G |
| Timer | 0-99 Mins & Hold (30 sec steps) |
| Dims HWD | 275 x 325 x 470mm |
| Weight | 21.8Kg (without rotor) |
| Power | 160 watts |
| Memory | 10 programs |
| Accel Rates | 10 programs |
| Decel Rates | 10 programs |

Rotors 6000 Rpm



| Rotor | BRK5412 | BRK5406 |
|--------------------------|------------|------------|
| Rotor type | 12 x 15ml | 6 x 50ml |
| Tube size max | 17 x 120mm | 30 x 120mm |
| Minimum speed Rpm | 500 | 500 |
| Maximum speed Rpm | 6,000 | 6,000 |
| Maximum rcf (G) | 3,800 | 3,800 |
| Radius max cms | 9.5 | 9.5 |
| Sample tube angle ° | 30 | 30 |
| Acceleration time (secs) | 25 | 25 |
| Deceleration time (secs) | 25 | 25 |
| Autoclavable (frequency) | 121°C (20) | 121°C (20) |

Reducers (Pack of 4)



RM05

RM15

| Rotor | BRK5412 | BRK5406 |
|---------------|-------------|-------------|
| Part number | RM05 (5ml) | RM15 (15ml) |
| Tube size max | 13 x 80mm | 17 x 120mm |
| Part number | RM10 (10ml) | RM25 (25ml) |
| Tube size max | 13 x 100mm | 25 x 100mm |

Welcome to the Future of Small Prime Centrifuges

In the past, manufacturers have offered limited rotor availability to Small Centrifuges.

Not anymore.

Centurion Scientific Ltd are evolving the marketplace and have introduced **Small Centrifuge Prime**.

A Small Centrifuge that offers:

| | | |
|---|--|----------|
| 1 | Micro rotors. 0.2, 0.4, 0.5, 1.5, 2.0, 2.2ml & PCR 15,000Rpm and 22,000 Rcf (G) max | Capacity |
| 2 | Haematocrit rotor Capillary and 2.0ml tubes 12,000Rpm and 13,500 Rcf(G) max | Capacity |
| 3 | Fixed angle rotors 15 & 50ml tube (reducers available) 6,000Rpm and 4,800 Rcf (G) max | Capacity |
| 4 | Swing out rotor 0.5 to 100ml tube (adaptors available) 4,000Rpm and 2,200 Rcf (G) max | Capacity |
| 5 | Cytology rotor. 3 types 4, 8 or 12 place (Double holder) 2,000Rpm and 550 Rcf (G) max | Capacity |



Display indicative only

LC Small Prime Centrifuge

LC. (230V 50/60Hz). 1.LC. (110V 60Hz)

| | |
|-------------|---------------------------------|
| Speed | 500-15,000 Rpm (10 Rpm steps) |
| Rcf Max | 22,000 G |
| Timer | 0-99 Mins & Hold (30 sec steps) |
| Dims HWD | 275 x 325 x 470mm |
| Weight | 21.8 Kg (without rotor) |
| Power | 175 Watts |
| Memory | 10 programs |
| Accel rates | 10 programs |
| Decel rates | 10 programs |

The following pages show available rotors.

Microtube Rotors 15,000 Rpm



With NEW high Domed polycarbonate lid



| Rotor | BRK5424 | BRK5436 | BRK5448 | BRK5494 |
|--------------------------|------------|------------|------------|----------------|
| Rotor type | 24 x 2ml | 36 x 0.5ml | 48 x 0.2ml | 4 x PCR Strips |
| Tube size max | 11 x 50mm | 8 x 30mm | 6 x 40mm | 6 x 40mm |
| Minimum Speed Rpm | 500 | 500 | 500 | 500 |
| Maximum Speed Rpm | 15,000 | 15,000 | 15,000 | 15,000 |
| Maximum Rcf (G) | 22,000 | 22,000 | 22,000 | 22,000 |
| Radius max cms | 8.5 | 8.5 | 8.5 | 8.5 |
| Sample tube angle (°) | 45 | 45 | 45 | 45 |
| Acceleration time (secs) | 25 | 25 | 25 | 25 |
| Deceleration time (secs) | 25 | 25 | 25 | 25 |
| Autoclavable (frequency) | 121°C (10) | 121°C (10) | 121°C (10) | 121°C (10) |

Refrigerated Centrifuges Only

| | | | | |
|---|-----|-----|-----|-----|
| Minimum Temperature | 4°C | 4°C | 4°C | 4°C |
| At maximum speed (relative to room temperature at 23°C) | | | | |

Reducers

(Pack of 24)



| Rotor | BRK5424 |
|---------------|-------------------|
| Part number | RS04 (0.2 -0.4ml) |
| Tube size max | 6 x 30mm |
| Part number | RS05 (0.5ml) |
| Tube size max | 8 x 30mm |

Haematocrit Rotor 12,000 Rpm



| Rotor | BRK5401 |
|--------------------------|---------------------------|
| Rotor type | 24 x capillary & 12 x 2ml |
| Tube size max | 2 x 75mm & 11 x 40mm |
| Minimum Speed Rpm | 500 |
| Maximum Speed Rpm | 12,000 |
| Maximum Rcf (G) | 13,500 |
| Radius max cms | 8.5 |
| Sample tube angle (°) | 0 & 60 |
| Acceleration time (secs) | 30 |
| Deceleration time (secs) | 30 |
| Autoclavable (frequency) | 121°C (10) |

Large Fixed Angle Rotors 6,000 Rpm



| Rotor | BRK5324 | BRK5308 |
|--------------------------|------------|------------|
| Rotor type | 24 x 15ml | 8 x 50ml |
| Size max | 17 x 120mm | 30 x 120mm |
| Minimum speed Rpm | 500 | 500 |
| Maximum speed Rpm | 6,000 | 6,000 |
| Maximum Rcf (G) | 4,800 | 4,800 |
| Radius max cms | 12 | 12 |
| Sample tube angle ° | 30 | 30 |
| Acceleration time (secs) | 35 | 35 |
| Deceleration time (secs) | 35 | 35 |
| Autoclavable (frequency) | 121°C (20) | 121°C (20) |

Refrigerated Centrifuges Only

| | | |
|---|-----|-----|
| Minimum Temperature | 4°C | 4°C |
| At maximum speed (relative to room temperature at 23°C) | | |

Reducers

(Pack of 4)



| Rotor | BRK5324 | BRK5308 |
|---------------|-------------|-------------|
| Part number | RM05 (5ml) | RM15 (15ml) |
| Tube size max | 13 x 80mm | 17 x 120mm |
| Part number | RM10 (10ml) | RM25 (25ml) |
| Tube size max | 13 x 100mm | 25 x 100mm |

Swing Out Rotor - 400ml max



BRK1000 Swing out Rotor

Shown with B5010 Buckets and sealed lids B5419

| | |
|----------------------|---------------------|
| Rotor / buckets | BRK1010 |
| Tube size max | 45 x 100mm |
| Minimum speed | 500Rpm |
| Maximum speed | 4000Rpm |
| Maximum Rcf(G) | 2200 |
| Radius max | 12.5cm |
| Tube angle | 0 degree |
| Acceleration time | 25 seconds |
| Deceleration time | 25 seconds |
| Autoclavable (times) | 121C (20) |
| Minimum Temperature | 4C (at 23C ambient) |

B5010 bucket (set 4) REQUIRED
100ml max per bucket



Adaptors for Swing out rotors

| Capacity | Size | To fit buckets B5100 | |
|--|--------|----------------------|-----------------|
| | | Part No. | Tubes per rotor |
| Tube type: Micro with cap Shape: point | | | |
| 0.5ml | 8x20 | AM405 | 36 |
| 1.5ml | 11x38 | AM420 | 24 |
| 2.0ml | 11x38 | AM420 | 24 |
| 0.2ml | 6x20 | AM402 | 36 |
| 0.4ml | 6x30 | AM404 | 36 |
| Tube type: Plain no cap Shape: round | | | |
| 1ml | 6x45 | AR401 | 36 |
| 3ml | 10x60 | AR403 | 28 |
| 5ml | 12x75 | AR405* | 28 |
| 6ml | 12x82 | AR405* | 28 |
| 7ml | 12x100 | AR407* | 28 |
| 9/10ml | 14x100 | AR409* | 24 |
| 15ml | 17x100 | AR415* | 8 |
| 25ml | 24x100 | AR425* | 8 |
| 50ml | 34x100 | AR450* | 4 |
| 100ml | 45x100 | AR4100* | 4 |
| 150ml | 52x100 | N/A | |
| 250ml | 62x100 | N/A | |
| Tube type: Falcon with cap Shape: point | | | |
| 15ml | 17x120 | AF415* | 8 |
| 50ml | 29x115 | AF450* | 4 |
| 175ml | 61x118 | N/A | |
| 15ml | 17x120 | N/A | |
| Tube type: Corning with cap* Shape: point | | | |
| 250ml | 60x172 | See K242/R | |
| 500ml | 98x148 | See K242/R | |
| Tube type: Falcon with cap Shape: square | | | |
| 12ml | 17x100 | AFS412 | 8 |
| 25ml | 25x90 | AFS425 | 4 |
| 30ml | 25x110 | AFS430 | 4 |
| 50ml | 29x115 | AFS450* | 4 |
| 15ml | 17x120 | N/A | N/A |
| Tube type: Nalgene/Oakridge Shape: round | | | |
| 10ml | 16x80 | ANO410* | 8 |
| 30ml | 26x95 | ANO430* | 4 |
| 50ml | 29x107 | ANO450 | 4 |
| 100ml | 38x106 | ANO485 | 4 |
| Tube type: Nalgene/Oakridge* Shape: flat | | | |
| 250ml | 62x130 | See K241/R | |
| 750ml | 98x153 | See K243/R | |
| Tube type: Monovette Shape: square | | | |
| 1.1-1.4ml | 8x82 | AM4014 | 24 |
| 2.7-3ml | 11x82 | AM403 | 24 |
| 2.6-2.9ml | 13x81 | AM429 | 24 |
| 4.5-5ml | 11x108 | AM403* | 24 |
| 7.5-8.2ml | 13x106 | AM479* | 24 |
| 4.5-5ml | 15x92 | AM450* | 20 |
| 9-10ml | 16x108 | AM490* | 20 |
| Tube type: Vacutainer Shape: round | | | |
| 1.6-5ml | 13x75 | AV416* | 24 |
| 4-7ml | 13x100 | AV450* | 16 |
| 8.5-10ml | 16x100 | AV480* | 12 |

Swing out Rotor - 8 x 10ml Max



Including 8 buckets

| Rotor | BRK5508M |
|--------------------------|-----------------|
| Rotor type | 8 x 10ml |
| Tube size max | 15 x 115mm |
| Minimum Speed Rpm | 500 Rpm |
| Maximum Speed Rpm | 4,000 Rpm |
| Maximum Rcf (G) | 2200 |
| Radius max cms | 12.3 |
| Sample tube angle (°) | 0 |
| Acceleration time (secs) | 20 |
| Deceleration time (secs) | 20 |
| Autoclavable (frequency) | 121°C (20) |



10ml

Cytology Rotors available

Using centrifugal force to separate and deposit a monolayer of cells onto slides, whilst maintaining integrity within a clearly defined area FROM ANY FLUID MATRIX. Cytocentrifugation also constructively flattens cells for excellent nuclear presentation.

Applications include Cytology, Histology, Haematology, Oncology, Immunochemistry, Serology and Microbiology.

Offering samples from 0.1ml to 6ml and an extensive range of accessories, we have your Cytology needs covered.



| Rotor | 4420 | 4430 | 4460 |
|--------------------------|------------------|------------------|------------------|
| Rotor type | 4 x 0.2 to 6ml | 8 x 0.2 to 6ml | 12 x 0.2 to 6ml |
| Tube size max | Single or double | Single or double | Single or double |
| Minimum speed Rpm | 200 | 200 | 200 |
| Maximum speed Rpm | 2,000 | 2,000 | 2,000 |
| Maximum Rcf (G) | 550 | 550 | 550 |
| Radius max cms | 12 | 12 | 12 |
| Sample tube angle ° | 0 | 0 | 0 |
| Acceleration time (secs) | 25 | 25 | 25 |
| Deceleration time (secs) | 25 | 25 | 25 |
| Autoclavable (frequency) | 121°C (20) | 121°C (20) | 121°C (20) |

Cytology rotor includes Rotor, Sealed Lid, Clips, 24 holders with filter card & 100 slides



Pack of 24

4446

Double sample holder with card (up to 1ml)



Pack of 24

4444

Single sample holder with card (up to 1ml)



Pack of 24

4600

Double sample holder with card (up to 6ml)



Each

4462

Stainless steel clips

Welcome to the Future of Medium Prime Centrifuges

In the past, manufacturers have offered limited rotor availability to Medium Centrifuges.

Not anymore.

Centurion Scientific Ltd are evolving the marketplace and have introduced **Medium Centrifuge Prime**.

A medium Centrifuge that offers.

| | | |
|---|--|----------|
| 1 | Micro rotors. 0.2, 0.4, 0.5, 1.5, 2.0, 2.2ml & PCR 15,000Rpm and 22,000 Rcf (G) max | Capacity |
| 2 | Haematocrit rotor Capillary and 2.0ml tubes 12,000Rpm and 13,500 Rcf(G) max | Capacity |
| 3 | Fixed angle rotors 15 & 50ml tube (reducers available) 6,000Rpm and 4,800 Rcf (G) max | Capacity |
| 4 | Swing out rotor 0.5 to 250ml tube (adaptors available) 4,000Rpm and 2,200 Rcf (G) max | Capacity |
| 5 | Cytology rotor. 3 types 4, 8 or 12 place (Double holder) 2,000Rpm and 550 Rcf (G) max | Capacity |



Display indicative only

LL Medium Prime Centrifuge (1L)

LL.(230V 50/60Hz). 1.LL (110V 60Hz)

| | |
|-------------|---------------------------------|
| Speed | 500-15,000 Rpm (10 Rpm steps) |
| Rcf Max | 22,000 G |
| Timer | 0-99 Mins & Hold (30 sec steps) |
| Dims HWD. | 310 x 400 x 500mm |
| Weight | 32 Kg (without rotor) |
| Power | 310 Watts |
| Memory | 10 programs |
| Accel rates | 10 programs |
| Decel rates | 10 programs |

Welcome to the Future of Medium Prime Refrigerated Centrifuges

In the past, manufacturers have offered limited rotor availability to Medium Centrifuges.

Not anymore.

Centurion Scientific Ltd are evolving the marketplace and have introduced **Medium Centrifuge Prime.**

A medium Centrifuge that offers.

| | | |
|---|--|----------|
| 1 | Micro rotors. 0.2, 0.4, 0.5, 1.5, 2.0, 2.2ml & PCR 15,000Rpm and 22,000 Rcf (G) max | Capacity |
| 2 | Haematocrit rotor Capillary and 2.0ml tubes 12,000Rpm and 13,500 Rcf(G) max | Capacity |
| 3 | Fixed angle rotors 15 & 50ml tube (reducers available) 6,000Rpm and 4,800 Rcf (G) max | Capacity |
| 4 | Swing out rotor 0.5 to 250ml tube (adaptors available) 4,000Rpm and 2,200 Rcf (G) max | Capacity |
| 5 | Cytology rotor. 3 types 4, 8 or 12 place (Double holder) 2,000Rpm and 550 Rcf (G) max | Capacity |

LLR Medium Prime Centrifuge (1L) Refrigerated

LLR.(230V 50Hz). 1.LLR.(110V 60Hz). 2.LLR.(230V 60Hz)



Display indicative only

| | |
|-------------|-----------------------------------|
| Speed | 500-15,000 Rpm (10 Rpm steps) |
| Rcf Max | 22,000 G |
| Timer | 0-99 Mins & Hold (30 sec steps) |
| Dims HWD | 315 x 450 x 635mm |
| Weight | 62 Kg (without rotor) |
| Power | 690 Watts |
| Memory | 10 programs |
| Accel rates | 10 programs |
| Decel rates | 10 programs |
| Temp | -9C to +40C PID controlled +/- 1C |

The following pages show available rotors.

Microtube Rotors 15,000 Rpm



With NEW high Domed polycarbonate lid



| Rotor | BRK5424 | BRK5436 | BRK5448 | BRK5494 |
|--------------------------|------------|------------|------------|----------------|
| Rotor type | 24 x 2ml | 36 x 0.5ml | 48 x 0.2ml | 4 x PCR Strips |
| Tube size max | 11 x 50mm | 8 x 30mm | 6 x 40mm | 6 x 40mm |
| Minimum Speed Rpm | 500 | 500 | 500 | 500 |
| Maximum Speed Rpm | 15,000 | 15,000 | 15,000 | 15,000 |
| Maximum Rcf (G) | 22,000 | 22,000 | 22,000 | 22,000 |
| Radius max cms | 8.5 | 8.5 | 8.5 | 8.5 |
| Sample tube angle (°) | 45 | 45 | 45 | 45 |
| Acceleration time (secs) | 25 | 25 | 25 | 25 |
| Deceleration time (secs) | 25 | 25 | 25 | 25 |
| Autoclavable (frequency) | 121°C (10) | 121°C (10) | 121°C (10) | 121°C (10) |

Refrigerated Centrifuges Only

| | | | | |
|---------------------|-----|-----|-----|-----|
| Minimum Temperature | 4°C | 4°C | 4°C | 4°C |
|---------------------|-----|-----|-----|-----|

At maximum speed (relative to room temperature at 23°C)

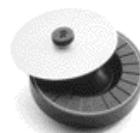
Reducers

(Pack of 24)



| Rotor | BRK5424 |
|---------------|-------------------|
| Part number | RS04 (0.2 -0.4ml) |
| Tube size max | 6 x 30mm |
| Part number | RS05 (0.5ml) |
| Tube size max | 8 x 30mm |

Haematocrit Rotor 12,000 Rpm



| Rotor | BRK5401 |
|--------------------------|---------------------------|
| Rotor type | 24 x capillary & 12 x 2ml |
| Tube size max | 2 x 75mm & 11 x 40mm |
| Minimum Speed Rpm | 500 |
| Maximum Speed Rpm | 12,000 |
| Maximum Rcf (G) | 13,500 |
| Radius max cms | 8.5 |
| Sample tube angle (°) | 0 & 60 |
| Acceleration time (secs) | 30 |
| Deceleration time (secs) | 30 |
| Autoclavable (frequency) | 121°C (10) |

High Speed Fixed Angle Rotors 10,000 Rpm



| Rotor | BRK5212 | BRK5206 |
|--------------------------|------------|------------|
| Rotor type | 12 x 15ml | 6 x 50ml |
| Tube size max | 17 x 120mm | 30 x 120mm |
| Minimum speed Rpm | 500 | 500 |
| Maximum speed Rpm | 10,000 | 10,000 |
| Maximum Rcf (G) | 10,600 | 10,600 |
| Radius max cms | 9.5 | 9.5 |
| Sample tube angle ° | 30 | 30 |
| Acceleration time (secs) | 35 | 35 |
| Deceleration time (secs) | 35 | 35 |
| Autoclavable (frequency) | 121°C (20) | 121°C (20) |

Refrigerated Centrifuges Only

| | | |
|---------------------|-----|-----|
| Minimum Temperature | 4°C | 4°C |
|---------------------|-----|-----|

At maximum speed (relative to room temperature at 23°C)

Reducers

(Pack of 4)



| Rotor | BRK5212 | BRK5206 |
|---------------|-------------|-------------|
| Part number | RM05 (5ml) | RM15(15ml) |
| Tube size max | 13 x 80mm | 17 x 120mm |
| Part number | RM10 (10ml) | RM25 (25ml) |
| Tube size max | 13 x 100mm | 25 x 100mm |

Large Fixed Angle Rotors 6,000 Rpm



| Rotor | BRK5324 | BRK5308 | BRK5100 |
|--------------------------|------------|------------|------------|
| Rotor type | 24 x 15ml | 8 x 50ml | 6 x 100ml |
| Size max | 17 x 120mm | 30 x 120mm | 45 x 125mm |
| Minimum speed Rpm | 500 | 500 | 500 |
| Maximum speed Rpm | 6,000 | 6,000 | 6,000 |
| Maximum Rcf (G) | 4,800 | 4,800 | 4,800 |
| Radius max cms | 12 | 12 | 12 |
| Sample tube angle ° | 30 | 30 | 30 |
| Acceleration time (secs) | 35 | 35 | 35 |
| Deceleration time (secs) | 35 | 35 | 35 |
| Autoclavable (frequency) | 121°C (20) | 121°C (20) | 121°C (20) |

Refrigerated Centrifuges Only

| | | | |
|---|-----|-----|-----|
| Minimum Temperature | 4°C | 4°C | 4°C |
| At maximum speed (relative to room temperature at 23°C) | | | |

Reducers



| Rotor | BRK5324 | BRK5308 | BRK5100 |
|---------------|-------------|-------------|-------------|
| Part number | RM05 (5ml) | RM15 (15ml) | RL10 (10ml) |
| Tube size max | 13 x 80mm | 17 x 120mm | 16 x 100mm |
| Part number | RM10 (10ml) | RM25 (25ml) | RL25 (25ml) |
| Tube size max | 13 x 100mm | 25 x 100mm | 25 x 100mm |
| | | | RL50 (50ml) |
| | | | 35 x 110mm |
| | | | RL85 (85ml) |
| | | | 39 x 110mm |

Swing Out Rotor 1 Litre Max



BRK1000 Swing out Rotor

Shown with B5250 Buckets and sealed lids B5419

| | |
|----------------------|---------------------|
| Rotor / buckets | BRK1025 |
| Tube size max | 62 x 100mm |
| Minimum speed | 500Rpm |
| Maximum speed | 4000Rpm |
| Maximum Rcf(G) | 2650 |
| Radius max | 14cm |
| Tube angle | 0 degree |
| Acceleration time | 25 seconds |
| Deceleration time | 25 seconds |
| Autoclavable (times) | 121C (20) |
| Minimum Temperature | 4C (at 23C ambient) |

B5250 bucket (set 4) REQUIRED
250ml max per Bucket



Set of 4

Adaptors for Swing out rotors

| | Capacity | Size | To fit buckets B5250 | |
|----------|--|------------|----------------------|-----------------|
| | | | Part No. | Tubes per rotor |
| | Tube type: Micro with cap Shape: point | | | |
| | 0.5ml | 8x20 | AM605 | 40 |
| | 1.5ml | 11x38 | AM620 | 28 |
| | 2.0ml | 11x38 | AM620 | 28 |
| | 0.2ml | 6x20 | AM602 | 48 |
| | Tube type: Plain no cap Shape: round | | | |
| | 0.4ml | 6x30 | AM604 | 48 |
| | 1ml | 6x45 | AR601 | 36 |
| | 3ml | 10x60 | AR603 | 28 |
| | 5ml | 12x75 | AR605 | 28 |
| | 6ml | 12x82 | AR605 | 28 |
| | 7ml | 12x100 | AR607 | 28 |
| | 9/10ml | 14x100 | AR609* | 24 |
| | 15ml | 17x100 | AR615* | 28 |
| | 25ml | 24x100 | AR625 | 8 |
| | 50ml | 34x100 | AR650 | 4 |
| | 100ml | 45x100 | AR6100 | 4 |
| 150ml | 52x100 | AR601 | | |
| 250ml | 62x100 | BUCKET 4 | | |
| | Tube type: Falcon with cap Shape: point | | | |
| | 15ml | 17x120 | AF615* | 16 |
| | 50ml | 29x115 | AF650* | 4 |
| | 175ml | 61x118 | AF6175* | 4 |
| 15ml | 17x120 | N/A | 4 | |
| | Tube type: Corning with cap* Shape: point | | | |
| | 250ml | 60x172 | See K242/R | |
| 500ml | 98x148 | See K242/R | | |
| | Tube type: Falcon with cap Shape: square | | | |
| | 12ml | 17x100 | AFS612* | 16 |
| | 25ml | 25x90 | AFS625* | 8 |
| | 30ml | 25x110 | AFS630 | 8 |
| | 50ml | 29x115 | AFS650 | 4 |
| 15ml | 17x120 | AFS614 | 4 | |
| | Tube type: Nalgene/Oakridge Shape: round | | | |
| | 10ml | 16x80 | ANO610 | 16 |
| | 30ml | 26x95 | ANO630 | 4 |
| | 50ml | 29x107 | ANO650 | 4 |
| | 100ml | 38x106 | ANO685 | 4 |
| | Tube type: Nalgene/Oakridge* Shape: flat | | | |
| | 250ml | 62x130 | Buckets 5250 | 4 |
| | 750ml | 98x153 | See K243/R | |
| | Tube type: Monovette Shape: square | | | |
| | 1.1-1.4ml | 8x82 | AM6014 | 40 |
| | 2.7-3ml | 11x82 | AM603 | 40 |
| | 2.6-2.9ml | 13x81 | AM629 | 40 |
| | 4.5-5ml | 11x108 | AM603* | 40 |
| | 7.5-8.2ml | 13x106 | AM679* | 40 |
| | 4.5-5ml | 15x92 | AM650 | 28 |
| 9-10ml | 16x108 | AM690* | 28 | |
| | Tube type: Vacutainer Shape: round | | | |
| | 1.6-5ml | 13x75 | AV616 | 40 |
| | 4-7ml | 13x100 | AV650 | 40 |
| 8.5-10ml | 16x100 | AV680 | 28 | |

Microtiter Plate Rotor 4 x Standard or 2 x High Plates



| Rotor | BRK5540 |
|--------------------------|-----------------------|
| Buckets | Complete with buckets |
| Sealed Lids | Available with |
| Rotor type | 4 x STD Plates |
| Tube size max | 85mm x 128mm |
| Minimum Speed Rpm | 500 Rpm |
| Maximum Speed Rpm | 3500 Rpm |
| Maximum Rcf (G) | 2500 |
| Radius max cms | 14 |
| Sample tube angle (°) | 0 °C (10) |
| Acceleration time (secs) | 30 |
| Deceleration time (secs) | 30 |
| Autoclavable (frequency) | 121°C (20) |

Swing out Rotor - 8 x 15ml Max



Including 8 buckets

| Rotor | BRK5508L |
|--------------------------|-----------------------|
| Buckets | Complete with buckets |
| Sealed Lids | N/A |
| Rotor type | 8 x 15ml |
| Tube size max | 17 x 125mm |
| Minimum Speed Rpm | 500 Rpm |
| Maximum Speed Rpm | 4,000 Rpm |
| Maximum Rcf (G) | 2,600 |
| Radius max cms | 14.6 |
| Sample tube angle (°) | 0 |
| Acceleration time (secs) | 20 |
| Deceleration time (secs) | 20 |
| Autoclavable (frequency) | 121°C (20) |



Cytology Rotors available

Using centrifugal force to separate and deposit a monolayer of cells onto slides, whilst maintaining integrity within a clearly defined area FROM ANY FLUID MATRIX. Cyto centrifugation also constructively flattens cells for excellent nuclear presentation.

Applications include Cytology, Histology, Haematology, Oncology, Immunochemistry, Serology and Microbiology.

Offering samples from 0.1ml to 6ml and an extensive range of accessories we have your Cytology needs covered.



| Rotor | 4420 | 4430 | 4460 |
|--------------------------|------------------|------------------|------------------|
| Rotor type | 4 x 0.2 to 6ml | 8 x 0.2 to 6ml | 12 x 0.2 to 6ml |
| Tube size max | Single or double | Single or double | Single or double |
| Minimum speed Rpm | 200 | 200 | 200 |
| Maximum speed Rpm | 2,000 | 2,000 | 2,000 |
| Maximum Rcf (G) | 550 | 550 | 550 |
| Radius max cms | 12 | 12 | 12 |
| Sample tube angle ° | 0 | 0 | 0 |
| Acceleration time (secs) | 25 | 25 | 25 |
| Deceleration time (secs) | 25 | 25 | 25 |
| Autoclavable (frequency) | 121°C (20) | 121°C (20) | 121°C (20) |

Cytology rotor includes Rotor, Sealed Lid, Clips, 24 holders with filter card & 100 slides



4446

Double sample holder with card (up to 1ml)

4444

Single sample holder with card (up to 1ml)

4600

Double sample holder with card (up to 6ml)

4462

Stainless steel clips

2016 Refrigerated Centrifuge temperature control

At Centurion, we have taken temperature control seriously. We keep the refrigeration unit and the refrigerated centrifuge running constantly, as this not only gives the compressor a longer and more reliable life, but stops the constant surges of start up power. Due to the fact that the refrigeration unit is running constantly, it is quite usual to see ice in the chamber even at above freezing temperatures.

For 2016, a new larger, yet more efficient CFC free compressor has been used which gives lower power needs. To maintain the temperature, we have a highly efficient compressor gas bypass solenoid valve, where we pulse heat via a highly accurate controller system (PID controller, which calculates and manages the temperature).

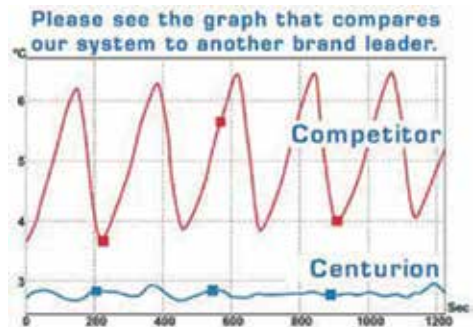
By running both in conjunction, you get better overall temperature control, achieving the desired set temperature. Imagine using a shower; you turn on both cold and hot water, adjusting to suit your desired temperature. You would not want to use one where you had to stand under the cold water, then the hot, then the cold in order to regulate the temperature.

Centurion has a set temperature of 3°C, and the competitor of 4°C

This allows us to separate the target areas, to show how each machine regulates the temperature. Both refrigeration units

use the same air probes, temperature units, and have the probes set at the same distance from the rotor, and finally, the correct vertical distance to the optimum tube area. But as you can see, we control to 0.5°C, whereas our competitor controls it to 3.5°C, the control of our centrifuge is unsurpassed, and our competitors', which all use the same method of turning the compressor on and off, is shown to have very poor control. Having the temperature being so controlled means that the Centurion's power usage is less, and the compressor lasts longer.

This system has been in use for over 20 years, so we do know the longevity of our products. Require complete accuracy with your samples? Purchase a Centurion Centrifuge for total peace of mind. Tried, tested and proven as one of the most accurate systems in the market place.



Bench Centrifuge or Bench Centrifuge with Trolley

True Flexibility

| User features to Floor Standing Centrifuge | Advantages |
|---|--|
| Floor standing Yet under bench fit, only 71cm high | Saves precious bench space, Flexible area use |
| Gives an easy loading height | Ease of Ergonomics For tube and rotor variances |
| Secure locking castors | Portable, easily moved around for safety |
| Strong design, with safe retention lip | Gives safe & quiet use |

Available in both Ambient and Refrigerated models



HL Large Prime Centrifuge (2/3L)

HL.(230V 50/60Hz). 1.HL.(110V 60Hz)



Display indicative only

| | |
|-------------|------------------------------------|
| Speed | 500-15,000 Rpm (10 Rpm steps) |
| Rcf Max | 22,000 G |
| Timer | 0-99 Mins & Hold (30 sec steps) |
| Dimensions | HWD 375 x 600 x 630mm |
| Weight | 63.5 Kg (without rotor) |
| Power | 750 Watts |
| Memory | 10 programs |
| Accel rates | 10 programs |
| Decel rates | 10 programs |

HL with Trolley



Display indicative only

| | |
|-------------------|-------|
| Trolley available | |
| Part number. | XMFS |
| Total height | 71 cm |

The following pages show available rotors.

Bench Centrifuge or Bench Centrifuge with Trolley

True Flexibility

| User features to Floor Standing Centrifuge | Advantages |
|---|--|
| Floor standing Yet under bench fit, only 71cm high | Saves precious bench space, Flexible area use |
| Gives an easy loading height | Ease of Ergonomics For tube and rotor variances |
| Secure locking castors | Portable, easily moved around for safety |
| Strong design, with safe retention lip | Gives safe & quiet use |

Available in both Ambient and Refrigerated models



HLR Large Prime Centrifuge (2/3L) Refrigerated

HLR.(230V 50Hz). 1.HLR.(110V 60Hz). 2.HLR.(230V 60Hz)



Display indicative only

| | |
|-------------|---|
| Speed | 500-15,000 Rpm (10 Rpm steps) |
| Rcf Max | 22,000 G |
| Timer | 0-99 Mins & Hold (30 sec steps) |
| Dimensions | HWD 410 x 998 x 630mm |
| Weight | 110 Kg (without rotor) |
| Power | 1200 Watts |
| Memory | 10 programs |
| Accel rates | 10 programs |
| Decel rates | 10 programs |
| Temp | -9°C to + 40°C PID Controlled to + / - 1°C |

HLR with Trolley



Display indicative only

Trolley available

Part number. XMRF5

Total height 71 cm

The following pages show available rotors.

Swing Out Rotor - 2 Litre max



BRK3000 Swing out rotor

Shown with B2000 buckets and sealed lids B5319

| | |
|----------------------|---------------------|
| Rotor / buckets | BRK3020 |
| Tube size max | 98 x 160mm |
| Minimum speed | 500Rpm |
| Maximum speed | 4000Rpm |
| Maximum Rcf(G) | 3600 |
| Radius max | 20.5cm |
| Tube angle | 0 degree |
| Acceleration time | 45 seconds |
| Deceleration time | 45 seconds |
| Autoclavable (times) | 121C (20) |
| Minimum Temperature | 4C (at 23C ambient) |

B2000 bucket (set 4) REQUIRED
500ml max per bucket



Set of 4

Adaptors for Swing out rotors

| Capacity | Size | To fit buckets B3000 | |
|--|--------|----------------------|-----------------|
| | | Part No. | Tubes per rotor |
| Tube type: Micro with cap Shape: point | | | |
| 0.5ml | 8x20 | AM805 | 120 |
| 1.5ml | 11x38 | AM820 | 84 |
| 2.0ml | 11x38 | AM820 | 84 |
| 0.2ml | 6x20 | AM802 | 168 |
| 0.4ml | 6x30 | AM804 | 168 |
| Tube type: Plain no cap Shape: round | | | |
| 1ml | 6x45 | AR801 | 168 |
| 3ml | 10x60 | AR803 | 96 |
| 5ml | 12x75 | AR805 | 96 |
| 6ml | 12x82 | AR805 | 96 |
| 7ml | 12x100 | AR807 | 96 |
| 9/10ml | 14x100 | AR809 | 84 |
| 15ml | 17x100 | AR815 | 48 |
| 25ml | 24x100 | AR825 | 28 |
| 50ml | 34x100 | AR850 | 16 |
| 100ml | 45x100 | AR8100 | 8 |
| 150ml | 52x100 | AR8150 | 4 |
| 250ml | 62x100 | AR8250 | 4 |
| Tube type: Falcon with cap Shape: point | | | |
| 15ml | 17x120 | AF815 | 48 |
| 50ml | 29x115 | AF850 | 16 |
| 175ml | 61x118 | AF8175 | 4 |
| 15ml | 17x120 | | |
| Tube type: Corning with cap* Shape: point | | | |
| 250ml | 60x172 | AF8250 | 4 |
| 500ml | 98x148 | AF8500 | 4 |
| Tube type: Falcon with cap Shape: square | | | |
| 12ml | 17x100 | AFS812 | 48 |
| 25ml | 25x90 | AFS825 | 28 |
| 30ml | 25x110 | AFS830 | 28 |
| 50ml | 29x115 | AFS850 | 20 |
| 15ml | 17x120 | AFS850 | 48 |
| Tube type: Nalgene/Oakridge Shape: round | | | |
| 10ml | 16x80 | ANO810 | 48 |
| 30ml | 26x95 | ANO830 | 28 |
| 50ml | 29x107 | ANO850 | 24 |
| 100ml | 38x106 | ANO885 | 12 |
| Tube type: Nalgene/Oakridge* Shape: flat | | | |
| 250ml | 62x130 | ANO8250 | 4 |
| 750ml | 98x153 | See K243/R | |
| Tube type: Monovette Shape: square | | | |
| 1.1-1.4ml | 8x82 | AM8014 | 96 |
| 2.7-3ml | 11x82 | AM803 | 76 |
| 2.6-2.9ml | 13x81 | AM829 | 76 |
| 4.5-5ml | 11x108 | AM803 | 76 |
| 7.5-8.2ml | 13x106 | AM879 | 76 |
| 4.5-5ml | 15x92 | AM850 | 64 |
| 9-10ml | 16x108 | AM890 | 64 |
| Tube type: Vacutainer Shape: round | | | |
| 1.6-5ml | 13x75 | AV816 | 76 |
| 4-7ml | 13x100 | AV850 | 76 |
| 8.5-10ml | 16x100 | AV880 | 64 |

Swing Out Rotor - 3 Litre max



BRK3000 Swing out rotor

Shown with B3000 buckets and sealed lids B5319

| | |
|----------------------|---------------------|
| Rotor / buckets | BRK3030 |
| Tube size max | 98 x 170mm |
| Minimum speed | 500Rpm |
| Maximum speed | 4000Rpm |
| Maximum Rcf(G) | 4000 |
| Radius max | 22.5cm |
| Tube angle | 0 degree |
| Acceleration time | 45 seconds |
| Deceleration time | 45 seconds |
| Autoclavable (times) | 121C (20) |
| Minimum Temperature | 4C (at 23C ambient) |

B3000 bucket (set 4) REQUIRED
750ml max per bucket



Set of 4

Adaptors for Swing out rotors

| Capacity | Size | To fit buckets B3000 | |
|--|--------|----------------------|-----------------|
| | | Part No. | Tubes per rotor |
| Tube type: Micro with cap Shape: point | | | |
| 0.5ml | 8x20 | AM805 | 120 |
| 1.5ml | 11x38 | AM820 | 84 |
| 2.0ml | 11x38 | AM820 | 84 |
| 0.2ml | 6x20 | AM802 | 168 |
| 0.4ml | 6x30 | AM804 | 168 |
| Tube type: Plain no cap Shape: round | | | |
| 1ml | 6x45 | AR801 | 168 |
| 3ml | 10x60 | AR803 | 96 |
| 5ml | 12x75 | AR805 | 96 |
| 6ml | 12x82 | AR805 | 96 |
| 7ml | 12x100 | AR807 | 96 |
| 9/10ml | 14x100 | AR809 | 84 |
| 15ml | 17x100 | AR815 | 48 |
| 25ml | 24x100 | AR825 | 28 |
| 50ml | 34x100 | AR850 | 16 |
| 100ml | 45x100 | AR8100 | 8 |
| 150ml | 52x100 | AR8150 | 4 |
| 250ml | 62x100 | AR8250 | 4 |
| Tube type: Falcon with cap Shape: point | | | |
| 15ml | 17x120 | AF815 | 48 |
| 50ml | 29x115 | AF850 | 16 |
| 175ml | 61x118 | AF8175 | 4 |
| 15ml | 17x120 | | |
| Tube type: Corning with cap* Shape: point | | | |
| 250ml | 60x172 | AF8250 | 4 |
| 500ml | 98x148 | AF8500 | 4 |
| Tube type: Falcon with cap Shape: square | | | |
| 12ml | 17x100 | AFS812 | 48 |
| 25ml | 25x90 | AFS825 | 28 |
| 30ml | 25x110 | AFS830 | 28 |
| 50ml | 29x115 | AFS850 | 20 |
| 15ml | 17x120 | AFS850 | 48 |
| Tube type: Nalgene/Oakridge Shape: round | | | |
| 10ml | 16x80 | ANO810 | 48 |
| 30ml | 26x95 | ANO830 | 28 |
| 50ml | 29x107 | ANO850 | 24 |
| 100ml | 38x106 | ANO885 | 12 |
| Tube type: Nalgene/Oakridge* Shape: flat | | | |
| 250ml | 62x130 | ANO8250 | 4 |
| 750ml | 98x153 | See K243/R | |
| Tube type: Monovette Shape: square | | | |
| 1.1-1.4ml | 8x82 | AM8014 | 96 |
| 2.7-3ml | 11x82 | AM803 | 76 |
| 2.6-2.9ml | 13x81 | AM829 | 76 |
| 4.5-5ml | 11x108 | AM803 | 76 |
| 7.5-8.2ml | 13x106 | AM879 | 76 |
| 4.5-5ml | 15x92 | AM850 | 64 |
| 9-10ml | 16x108 | AM890 | 64 |
| Tube type: Vacutainer Shape: round | | | |
| 1.6-5ml | 13x75 | AV816 | 76 |
| 4-7ml | 13x100 | AV850 | 76 |
| 8.5-10ml | 16x100 | AV880 | 64 |

R&D Team

**Watch this space for
our Blood Bag Rotor.
Release date:
mid/late 2016!**

CENTURION
SCIENTIFIC LIMITED



Microtitor Plate Rotor 4 x Standard or 2 x High Plates



| Rotor | BRK5540 |
|--------------------------|-----------------------|
| Buckets | Complete with buckets |
| Sealed Lids | Available with |
| Rotor type | 4 x STD Plates |
| Tube size max | 85mm x 128mm |
| Minimum Speed Rpm | 500 Rpm |
| Maximum Speed Rpm | 3500 Rpm |
| Maximum Rcf (G) | 2500 |
| Radius max cms | 14 |
| Sample tube angle (°) | 0 °C (10) |
| Acceleration time (secs) | 30 |
| Deceleration time (secs) | 30 |
| Autoclavable (frequency) | 121°C (20) |

Large Fixed Angle Rotors 6,000 Rpm



| Rotor | BRK5324 | BRK5308 | BRK5100 |
|--------------------------|------------|------------|------------|
| Rotor type | 24 x 15ml | 8 x 50ml | 6 x 100ml |
| Size max | 17 x 120mm | 30 x 120mm | 45 x 125mm |
| Minimum speed Rpm | 500 | 500 | 500 |
| Maximum speed Rpm | 6,000 | 6,000 | 6,000 |
| Maximum Rcf (G) | 4,800 | 4,800 | 4,800 |
| Radius max cms | 12 | 12 | 12 |
| Sample tube angle ° | 30 | 30 | 30 |
| Acceleration time (secs) | 35 | 35 | 35 |
| Deceleration time (secs) | 35 | 35 | 35 |
| Autoclavable (frequency) | 121°C (20) | 121°C (20) | 121°C (20) |

Refrigerated Centrifuges Only

| | | | |
|---|-----|-----|-----|
| Minimum Temperature | 4°C | 4°C | 4°C |
| At maximum speed (relative to room temperature at 23°C) | | | |

Reducers



| Rotor | BRK5324 | BRK5308 | BRK5100 |
|---------------|-------------|-------------|-------------|
| Part number | RM05 (5ml) | RM15 (15ml) | RL10 (10ml) |
| Tube size max | 13 x 80mm | 17 x 120mm | 16 x 100mm |
| Part number | RM10 (10ml) | RM25 (25ml) | RL25 (25ml) |
| Tube size max | 13 x 100mm | 25 x 100mm | 25 x 100mm |
| | | | RL50 (50ml) |
| | | | 35 x 110mm |
| | | | RL85 (85ml) |
| | | | 39 x 110mm |

High Speed Fixed Angle Rotors 10,000 Rpm



| Rotor | BRK5224 | BRK5208 | BRK5210 |
|--------------------------|------------|------------|------------|
| Rotor type | 24 x 15ml | 8 x 50ml | 6 x 100ml |
| Size max | 17 x 120mm | 30 x 120mm | 45 x 125mm |
| Minimum speed Rpm | 500 | 500 | 500 |
| Maximum speed Rpm | 10,000 | 10,000 | 10,000 |
| Maximum Rcf (G) | 13,400 | 13,400 | 13,400 |
| Radius max cms | 12 | 12 | 12 |
| Sample tube angle ° | 30 | 30 | 30 |
| Acceleration time (secs) | 35 | 35 | 35 |
| Deceleration time (secs) | 35 | 35 | 35 |
| Autoclavable (frequency) | 121°C (20) | 121°C (20) | 121°C (20) |

Refrigerated Centrifuges Only

| | | | |
|---|-----|-----|-----|
| Minimum Temperature | 4°C | 4°C | 4°C |
| At maximum speed (relative to room temperature at 23°C) | | | |

Reducers



| Rotor | BRK5224 | BRK5208 | BRK5210 |
|---------------|-------------|-------------|-------------|
| Part number | RM05 (5ml) | RM15 (15ml) | RL10 (10ml) |
| Tube size max | 13 x 80mm | 17 x 120mm | 16 x 100mm |
| Part number | RM10 (10ml) | RM25 (25ml) | RL25 (25ml) |
| Tube size max | 13 x 100mm | 25 x 100mm | 25 x 100mm |
| | | | RL50 (50ml) |
| | | | 35 x 110mm |
| | | | RL85 (85ml) |
| | | | 39 x 110mm |

Microtube Rotors 15,000 Rpm



With NEW
high Domed
polycarbonate
lid



| Rotor | BRK5424 | BRK5436 | BRK5448 | BRK5494 |
|--------------------------|------------|------------|------------|----------------|
| Rotor type | 24 x 2ml | 36 x 0.5ml | 48 x 0.2ml | 4 x PCR Strips |
| Tube size max | 11 x 50mm | 8 x 30mm | 6 x 40mm | 6 x 40mm |
| Minimum Speed Rpm | 500 | 500 | 500 | 500 |
| Maximum Speed Rpm | 15,000 | 15,000 | 15,000 | 15,000 |
| Maximum Rcf (G) | 22,000 | 22,000 | 22,000 | 22,000 |
| Radius max cms | 8.5 | 8.5 | 8.5 | 8.5 |
| Sample tube angle (°) | 45 | 45 | 45 | 45 |
| Acceleration time (secs) | 25 | 25 | 25 | 25 |
| Deceleration time (secs) | 25 | 25 | 25 | 25 |
| Autoclavable (frequency) | 121°C (10) | 121°C (10) | 121°C (10) | 121°C (10) |

Refrigerated Centrifuges Only

| | | | | |
|---|-----|-----|-----|-----|
| Minimum Temperature | 4°C | 4°C | 4°C | 4°C |
| At maximum speed (relative to room temperature at 23°C) | | | | |

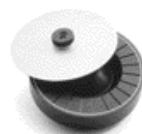
Reducers

(Pack of 24)



| Rotor | BRK5424 |
|---------------|-------------------|
| Part number | RS04 (0.2 -0.4ml) |
| Tube size max | 6 x 30mm |
| Part number | RS05 (0.5ml) |
| Tube size max | 8 x 30mm |

Haematocrit Rotor 12,000 Rpm



| Rotor | BRK5401 |
|--------------------------|---------------------------|
| Rotor type | 24 x capillary & 12 x 2ml |
| Tube size max | 2 x 75mm & 11 x 40mm |
| Minimum Speed Rpm | 500 |
| Maximum Speed Rpm | 12,000 |
| Maximum Rcf (G) | 13,500 |
| Radius max cms | 8.5 |
| Sample tube angle (°) | 0 & 60 |
| Acceleration time (secs) | 30 |
| Deceleration time (secs) | 30 |
| Autoclavable (frequency) | 121°C (10) |

HLFS/R Floor Standing Centrifuge (3L)

True Flexibility

| User features to Floor Standing Centrifuge | Advantages |
|---|--|
| Floor standing Yet under bench fit, only 71cm high | Saves precious bench space, Flexible area use |
| Smaller footprint than Bench model | Space saving R models 30% smaller footprint |
| Gives an easy loading height | Ease of Ergonomics For tube and rotor variances |
| Secure locking castors | Portable, easily moved around for safety |

Available in both Ambient and Refrigerated models



HLFS/R Floor Standing Centrifuge (3L Max)



Display indicative only

HLFS Ambient

HLFS.(230V 50/60Hz). 1.HLFS.(110V 60Hz)

| | |
|-------------|------------------------------------|
| Speed | 500-15,000 Rpm (10 Rpm steps) |
| Rcf Max | 22,000 G |
| Timer | 0-99 Mins & Hold (30 sec steps) |
| Dimensions | HWD 710 x 650 x 630mm |
| Weight | 80 Kg (without rotor) |
| Power | 750 Watts |
| Memory | 10 programs |
| Accel rates | 10 programs |
| Decel rates | 10 programs |

HLFSR Refrigerated

HLFSR.(230V 50Hz). 1.HLFSR.(110V 60Hz).
2.HLFSR.(230V 60Hz)

| | |
|-------------|---|
| Speed | 500-15,000 Rpm (10 Rpm steps) |
| Rcf Max | 22,000 G |
| Timer | 0-99 Mins & Hold (30 sec steps) |
| Dimensions | HWD 710 x 650 x 630mm |
| Weight | 125 Kg (without rotor) |
| Power | 1200 Watts |
| Memory | 10 programs |
| Accel rates | 10 programs |
| Decel rates | 10 programs |
| Temp | -9°C to + 40°C PID Controlled to + / - 1°C |

The following pages show available rotors.

Swing Out Rotor - 2 Litre max



BRK3000 Swing out rotor

Shown with B2000 Buckets and sealed lids B5319

| | |
|----------------------|---------------------|
| Rotor / buckets | BRK3020 |
| Tube size max | 98 x 155mm |
| Minimum speed | 500Rpm |
| Maximum speed | 4000Rpm |
| Maximum Rcf(G) | 3600 |
| Radius max | 20.5cm |
| Tube angle | 0 degree |
| Acceleration time | 45 seconds |
| Deceleration time | 45 seconds |
| Autoclavable (times) | 121C (20) |
| Minimum Temperature | 4C (at 23C ambient) |

B2000 bucket (set 4) REQUIRED
500ml max per bucket
B5319 Sealed Lids (4)



Set of 4

Adaptors for Swing out rotors

| Capacity | Size | To fit bucket B2000 | |
|--|--------|---------------------|-----------------|
| | | Part No. | Tubes per rotor |
| Tube type: Micro with cap Shape: point | | | |
| 0.5ml | 8x20 | AM805 | 120 |
| 1.5ml | 11x38 | AM820 | 84 |
| 2.0ml | 11x38 | AM820 | 84 |
| 0.2ml | 6x20 | AM802 | 168 |
| 0.4ml | 6x30 | AM804 | 168 |
| Tube type: Plain no cap Shape: round | | | |
| 1ml | 6x45 | AR801 | 168 |
| 3ml | 10x60 | AR803 | 96 |
| 5ml | 12x75 | AR805 | 96 |
| 6ml | 12x82 | AR805 | 96 |
| 7ml | 12x100 | AR807 | 96 |
| 9/10ml | 14x100 | AR809 | 84 |
| 15ml | 17x100 | AR815 | 48 |
| 25ml | 24x100 | AR825 | 28 |
| 50ml | 34x100 | AR850 | 16 |
| 100ml | 45x100 | AR8100 | 8 |
| 150ml | 52x100 | AR8150 | 4 |
| 250ml | 62x100 | AR8250 | 4 |
| Tube type: Falcon with cap Shape: point | | | |
| 15ml | 17x120 | AF815 | 48 |
| 50ml | 29x115 | AF850 | 16 |
| 175ml | 61x118 | AF8175 | 4 |
| 15ml | 17x120 | | |
| Tube type: Corning with cap* Shape: point | | | |
| 250ml | 60x172 | AF8250 | 4 |
| 500ml | 98x148 | AF8500 | 4 |
| Tube type: Falcon with cap Shape: square | | | |
| 12ml | 17x100 | AFS812 | 48 |
| 25ml | 25x90 | AFS825 | 28 |
| 30ml | 25x110 | AFS830 | 28 |
| 50ml | 29x115 | AFS850 | 20 |
| 15ml | 17x120 | AFS850 | 48 |
| Tube type: Nalgene/Oakridge Shape: round | | | |
| 10ml | 16x80 | ANO810 | 48 |
| 30ml | 26x95 | ANO830 | 28 |
| 50ml | 29x107 | ANO850 | 24 |
| 100ml | 38x106 | ANO885 | 12 |
| Tube type: Nalgene/Oakridge* Shape: flat | | | |
| 250ml | 62x130 | ANO8250 | 4 |
| 750ml | 98x153 | See K243/R | |
| Tube type: Monovette Shape: square | | | |
| 1.1-1.4ml | 8x82 | AM8014 | 96 |
| 2.7-3ml | 11x82 | AM803 | 76 |
| 2.6-2.9ml | 13x81 | AM829 | 76 |
| 4.5-5ml | 11x108 | AM803 | 76 |
| 7.5-8.2ml | 13x106 | AM879 | 76 |
| 4.5-5ml | 15x92 | AM850 | 64 |
| 9-10ml | 16x108 | AM890 | 64 |
| Tube type: Vacutainer Shape: round | | | |
| 1.6-5ml | 13x75 | AV816 | 76 |
| 4-7ml | 13x100 | AV850 | 76 |
| 8.5-10ml | 16x100 | AV880 | 64 |

Swing Out Rotor - 3 Litre max



BRK3000 Swing out rotor

Shown with B3000 buckets and sealed lids B5319

| | |
|----------------------|---------------------|
| Rotor / buckets | BRK3030 |
| Tube size max | 98 x 170mm |
| Minimum speed | 500Rpm |
| Maximum speed | 4000Rpm |
| Maximum Rcf(G) | 4000 |
| Radius max | 22.5cm |
| Tube angle | 0 degree |
| Acceleration time | 45 seconds |
| Deceleration time | 45 seconds |
| Autoclavable (times) | 121C (20) |
| Minimum Temperature | 4C (at 23C ambient) |

B3000 bucket (set 4) REQUIRED
750ml max per bucket

B5319 Sealed Lids (4)



Set of 4

Adaptors for Swing out rotors

| | Capacity | Size | To fit buckets B3000 | |
|----------|--|--------|----------------------|-----------------|
| | | | Part No. | Tubes per rotor |
| | Tube type: Micro with cap Shape: point | | | |
| | 0.5m | 8x20 | AM805 | 120 |
| | 1.5ml | 11x38 | AM820 | 84 |
| | 2.0ml | 11x38 | AM820 | 84 |
| | 0.2ml | 6x20 | AM802 | 168 |
| | Tube type: Plain no cap Shape: round | | | |
| | 0.4ml | 6x30 | AM804 | 168 |
| | 1ml | 6x45 | AR801 | 168 |
| | 3ml | 10x60 | AR803 | 96 |
| | 5ml | 12x75 | AR805 | 96 |
| | 6ml | 12x82 | AR805 | 96 |
| | 7ml | 12x100 | AR807 | 96 |
| | 9/10ml | 14x100 | AR809 | 84 |
| | 15ml | 17x100 | AR815 | 48 |
| | 25ml | 24x100 | AR825 | 28 |
| | 50ml | 34x100 | AR850 | 16 |
| | 100ml | 45x100 | AR8100 | 8 |
| 150ml | 52x100 | AR8150 | 4 | |
| 250ml | 62x100 | AR8250 | 4 | |
| | Tube type: Falcon with cap Shape: point | | | |
| | 15ml | 17x120 | AF815 | 48 |
| | 50ml | 29x115 | AF850 | 16 |
| | 175ml | 61x118 | AF8175 | 4 |
| | Tube type: Corning with cap* Shape: point | | | |
| | 250ml | 60x172 | AF8250 | 4 |
| | 500ml | 98x148 | AF8500 | 4 |
| | Tube type: Falcon with cap Shape: square | | | |
| | 12ml | 17x100 | AFS812 | 48 |
| | 25ml | 25x90 | AFS825 | 28 |
| | 30ml | 25x110 | AFS830 | 28 |
| | 50ml | 29x115 | AFS850 | 20 |
| 15ml | 17x120 | AFS850 | 48 | |
| | Tube type: Nalgene/Oakridge Shape: round | | | |
| | 10ml | 16x80 | ANO810 | 48 |
| | 30ml | 26x95 | ANO830 | 28 |
| | 50ml | 29x107 | ANO850 | 24 |
| 100ml | 38x106 | ANO885 | 12 | |
| | Tube type: Nalgene/Oakridge* Shape: flat | | | |
| | 250ml | 62x130 | ANO8250 | 4 |
| | 750ml | 98x153 | ANO8750 | 4 |
| | Tube type: Monovette Shape: square | | | |
| | 1.1-1.4ml | 8x82 | AM8014 | 96 |
| | 2.7-3ml | 11x82 | AM803 | 76 |
| | 2.6-2.9ml | 13x81 | AM829 | 76 |
| | 4.5-5ml | 11x108 | AM803 | 76 |
| | 7.5-8.2ml | 13x106 | AM879 | 76 |
| | 4.5-5ml | 15x92 | AM850 | 64 |
| 9-10ml | 16x108 | AM890 | 64 | |
| | Tube type: Vacutainer Shape: round | | | |
| | 1.6-5ml | 13x75 | AV816 | 76 |
| | 4-7ml | 13x100 | AV850 | 76 |
| 8.5-10ml | 16x100 | AV880 | 64 | |

Microtitor Plate Rotor 4 x Standard or 2 x High Plates



| Rotor | BRK5540 |
|--------------------------|-----------------------|
| Buckets | Complete with buckets |
| Sealed Lids | Available with |
| Rotor type | 4 x STD Plates |
| Tube size max | 85mm x 128mm |
| Minimum Speed Rpm | 500 Rpm |
| Maximum Speed Rpm | 3500 Rpm |
| Maximum Rcf (G) | 2500 |
| Radius max cms | 14 |
| Sample tube angle (°) | 0 °C (10) |
| Acceleration time (secs) | 30 |
| Deceleration time (secs) | 30 |
| Autoclavable (frequency) | 121°C (20) |

Large Fixed Angle Rotors 6,000 Rpm



| Rotor | BRK5324 | BRK5308 | BRK5100 |
|--------------------------|------------|------------|------------|
| Rotor type | 24 x 15ml | 8 x 50ml | 6 x 100ml |
| Size max | 17 x 120mm | 30 x 120mm | 45 x 125mm |
| Minimum speed Rpm | 500 | 500 | 500 |
| Maximum speed Rpm | 6,000 | 6,000 | 6,000 |
| Maximum Rcf (G) | 4,800 | 4,800 | 4,800 |
| Radius max cms | 12 | 12 | 12 |
| Sample tube angle ° | 30 | 30 | 30 |
| Acceleration time (secs) | 35 | 35 | 35 |
| Deceleration time (secs) | 35 | 35 | 35 |
| Autoclavable (frequency) | 121°C (20) | 121°C (20) | 121°C (20) |

Refrigerated Centrifuges Only

| | | | |
|---------------------|-----|-----|-----|
| Minimum Temperature | 4°C | 4°C | 4°C |
|---------------------|-----|-----|-----|

At maximum speed (relative to room temperature at 23°C)

Reducers



| Rotor | BRK5324 | BRK5308 | BRK5100 |
|---------------|-------------|-------------|-------------|
| Part number | RM05 (5ml) | RM15 (15ml) | RL10 (10ml) |
| Tube size max | 13 x 80mm | 17 x 120mm | 16 x 100mm |
| Part number | RM10 (10ml) | RM25 (25ml) | RL25 (25ml) |
| Tube size max | 13 x 100mm | 25 x 100mm | 25 x 100mm |
| | | | RL50 (50ml) |
| | | | 35 x 110mm |
| | | | RL85 (85ml) |
| | | | 39 x 110mm |

High Speed Fixed Angle Rotors 10,000 Rpm



| Rotor | BRK5224 | BRK5208 | BRK5210 | BRK5210 |
|--------------------------|------------|------------|------------|------------|
| Rotor type | 24 x 15ml | 8 x 50ml | 6 x 100ml | 6 x 250ml |
| Size max | 17 x 120mm | 30 x 120mm | 45 x 125mm | 62 x 130mm |
| Minimum speed Rpm | 500 | 500 | 500 | 500 |
| Maximum speed Rpm | 10,000 | 10,000 | 10,000 | 10,000 |
| Maximum Rcf (G) | 13,400 | 13,400 | 13,400 | 15,650 |
| Radius max cms | 12 | 12 | 12 | 14 |
| Sample tube angle ° | 30 | 30 | 30 | 30 |
| Acceleration time (secs) | 40 | 45 | 45 | 60 |
| Deceleration time (secs) | 40 | 45 | 45 | 85 |
| Autoclavable (frequency) | 121°C (20) | 121°C (20) | 121°C (20) | 121°C (20) |

Refrigerated Centrifuges Only

| | | | | |
|---------------------|-----|-----|-----|-----|
| Minimum Temperature | 4°C | 4°C | 4°C | 4°C |
|---------------------|-----|-----|-----|-----|

At maximum speed (relative to room temperature at 23°C)

Reducers



| Rotor | BRK5224 | BRK5208 | BRK5210 | BRK5210 |
|---------------|-------------|-------------|-------------|---------------|
| Part number | RM05 (5ml) | RM15 (15ml) | RL10 (10ml) | RX10 (10ml) |
| Tube size max | 13 x 80mm | 17 x 120mm | 16 x 100mm | 16 x 100mm |
| Part number | RM10 (10ml) | RM25 (25ml) | RL25 (25ml) | RX25 (25ml) |
| Tube size max | 13 x 100mm | 25 x 100mm | 25 x 100mm | 25 x 100mm |
| | | | RL50 (50ml) | RX50 (50ml) |
| | | | 35 x 110mm | 35 x 110mm |
| | | | RL85 (85ml) | RX85 (85ml) |
| | | | 39 x 110mm | 39 x 110mm |
| | | | | RX100 (100ml) |
| | | | | 48 x 110mm |
| | | | | RX175 (175ml) |
| | | | | 62 x 121mm |

Microtube Rotors 15,000 Rpm



With NEW high Domed polycarbonate lid



| Rotor | BRK5424 | BRK5436 | BRK5448 | BRK5494 |
|--------------------------|------------|------------|------------|----------------|
| Rotor type | 24 x 2ml | 36 x 0.5ml | 48 x 0.2ml | 4 x PCR Strips |
| Tube size max | 11 x 50mm | 8 x 30mm | 6 x 40mm | 6 x 40mm |
| Minimum Speed Rpm | 500 | 500 | 500 | 500 |
| Maximum Speed Rpm | 15,000 | 15,000 | 15,000 | 15,000 |
| Maximum Rcf (G) | 22,000 | 22,000 | 22,000 | 22,000 |
| Radius max cms | 8.5 | 8.5 | 8.5 | 8.5 |
| Sample tube angle (°) | 45 | 45 | 45 | 45 |
| Acceleration time (secs) | 25 | 25 | 25 | 25 |
| Deceleration time (secs) | 25 | 25 | 25 | 25 |
| Autoclavable (frequency) | 121°C (10) | 121°C (10) | 121°C (10) | 121°C (10) |

Refrigerated Centrifuges Only

| | | | | |
|---------------------|-----|-----|-----|-----|
| Minimum Temperature | 4°C | 4°C | 4°C | 4°C |
|---------------------|-----|-----|-----|-----|

At maximum speed (relative to room temperature at 23°C)

Reducers

(Pack of 24)



| Rotor | BRK5424 |
|---------------|-------------------|
| Part number | RS04 (0.2 -0.4ml) |
| Tube size max | 6 x 30mm |
| Part number | RS05 (0.5ml) |
| Tube size max | 8 x 30mm |

Haematocrit Rotor 12,000 Rpm



| Rotor | BRK5401 |
|--------------------------|---------------------------|
| Rotor type | 24 x capillary & 12 x 2ml |
| Tube size max | 2 x 75mm & 11 x 40mm |
| Minimum Speed Rpm | 500 |
| Maximum Speed Rpm | 12,000 |
| Maximum Rcf (G) | 13,500 |
| Radius max cms | 8.5 |
| Sample tube angle (°) | 0 & 60 |
| Acceleration time (secs) | 30 |
| Deceleration time (secs) | 30 |
| Autoclavable (frequency) | 121°C (10) |

Haematocrit (Pvc) accessories



Haematocrit reader

Part Number : 8003



Sealant Clay

(Pack of 10)

Part Number : 8014



Plain Capillary Tubes

(Pack of 1000)

Part Number : 8012



Heperanised
Capillary Tubes

(Pack of 1000)

Part Number : 8013

Floor Standing Centrifuge

True Flexibility

| User features to Floor Standing Centrifuge | Advantages |
|---|--|
| Floor standing Yet under bench fit, only 71cm high | Saves precious bench space, Flexible area use |
| Smaller footprint than Bench model | Space saving R models 30% smaller footprint |
| Gives an easy loading height | Ease of Ergonomics For tube and rotor variances |
| Secure locking castors | Portable, easily moved around for safety |

Available in both Ambient and Refrigerated models



BBFS/R Floor Standing Centrifuge (4L Max)



Display indicative only

BBFS Ambient

BBFS.(230V 50/60Hz). 1.BBFS.(110V 60Hz)

| | |
|-------------|------------------------------------|
| Speed | 500-15,000 Rpm (10 Rpm steps) |
| Rcf Max | 22,000 G |
| Timer | 0-99 Mins & Hold (30 sec steps) |
| Dimensions | HWD 710 x 650 x 630mm |
| Weight | 80 Kg (without rotor) |
| Power | 750 Watts |
| Memory | 10 programs |
| Accel rates | 10 programs |
| Decel rates | 10 programs |

BBFSR Refrigerated

BBFSR.(230V 50Hz). 1.BBFSR.(110V 60Hz).
2.BBFSR.(230V 60Hz)

| | |
|-------------|---|
| Speed | 500-15,000 Rpm (10 Rpm steps) |
| Rcf Max | 22,000 G |
| Timer | 0-99 Mins & Hold (30 sec steps) |
| Dimensions | HWD 710 x 650 x 630mm |
| Weight | 125 Kg (without rotor) |
| Power | 1200 Watts |
| Memory | 10 programs |
| Accel rates | 10 programs |
| Decel rates | 10 programs |
| Temp | -9°C to + 40°C PID Controlled to + / - 1°C |

The following pages show available rotors.

Swing Out Rotor - 2 Litre max



BRK3000 Swing out rotor

Shown with B2000 Buckets and sealed lids B5319










| | |
|----------------------|---------------------|
| Rotor / buckets | BRK3020 |
| Tube size max | 98 x 160mm |
| Minimum speed | 500Rpm |
| Maximum speed | 4000Rpm |
| Maximum Rcf(G) | 3600 |
| Radius max | 20.5cm |
| Tube angle | 0 degree |
| Acceleration time | 45 seconds |
| Deceleration time | 45 seconds |
| Autoclavable (times) | 121C (20) |
| Minimum Temperature | 4C (at 23C ambient) |

B2000 bucket (set 4) REQUIRED
500ml max per bucket
B5319 Sealed Lids (4)



Set of 4

Adaptors for Swing out rotors

| | Capacity | Size | To fit bucket B2000 | |
|---|--|--------|---------------------|-----------------|
| | | | Part No. | Tubes per rotor |
|  | Tube type: Micro with cap Shape: point | | | |
| | 0.5m | 8x20 | AM805 | 120 |
| | 1.5ml | 11x38 | AM820 | 84 |
| | 2.0ml | 11x38 | AM820 | 84 |
| | 0.2ml | 6x20 | AM802 | 168 |
| | 0.4ml | 6x30 | AM804 | 168 |
|  | Tube type: Plain no cap Shape: round | | | |
| | 1ml | 6x45 | AR801 | 168 |
| | 3ml | 10x60 | AR803 | 96 |
| | 5ml | 12x75 | AR805 | 96 |
| | 6ml | 12x82 | AR805 | 96 |
| | 7ml | 12x100 | AR807 | 96 |
| | 9/10ml | 14x100 | AR809 | 84 |
| | 15ml | 17x100 | AR815 | 48 |
| | 25ml | 24x100 | AR825 | 28 |
| | 50ml | 34x100 | AR850 | 16 |
| | 100ml | 45x100 | AR8100 | 8 |
| | 150ml | 52x100 | AR8150 | 4 |
| 250ml | 62x100 | AR8250 | 4 | |
|  | Tube type: Falcon with cap Shape: point | | | |
| | 15ml | 17x120 | AF815 | 48 |
| | 50ml | 29x115 | AF850 | 16 |
| | 175ml | 61x118 | AF8175 | 4 |
| | 15ml | 17x120 | | |
|  | Tube type: Corning with cap* Shape: point | | | |
| | 250ml | 60x172 | AF8250 | 4 |
| | 500ml | 98x148 | AF8500 | 4 |
|  | Tube type: Falcon with cap Shape: square | | | |
| | 12ml | 17x100 | AFS812 | 48 |
| | 25ml | 25x90 | AFS825 | 28 |
| | 30ml | 25x110 | AFS830 | 28 |
| | 50ml | 29x115 | AFS850 | 20 |
| | 15ml | 17x120 | AFS850 | 48 |
|  | Tube type: Nalgene/Oakridge Shape: round | | | |
| | 10ml | 16x80 | ANO810 | 48 |
| | 30ml | 26x95 | ANO830 | 28 |
| | 50ml | 29x107 | ANO850 | 24 |
| | 100ml | 38x106 | ANO885 | 12 |
|  | Tube type: Nalgene/Oakridge* Shape: flat | | | |
| | 250ml | 62x130 | ANO8250 | 4 |
| | 750ml | 98x153 | See K243/R | |
|  | Tube type: Monovette Shape: square | | | |
| | 1.1-1.4ml | 8x82 | AM8014 | 96 |
| | 2.7-3ml | 11x82 | AM803 | 76 |
| | 2.6-2.9ml | 13x81 | AM829 | 76 |
| | 4.5-5ml | 11x108 | AM803 | 76 |
| | 7.5-8.2ml | 13x106 | AM879 | 76 |
| | 4.5-5ml | 15x92 | AM850 | 64 |
| | 9-10ml | 16x108 | AM890 | 64 |
|  | Tube type: Vacutainer Shape: round | | | |
| | 1.6-5ml | 13x75 | AV816 | 76 |
| | 4-7ml | 13x100 | AV850 | 76 |
| | 8.5-10ml | 16x100 | AV880 | 64 |

Swing Out Rotor - 3 Litre max



BRK3000 Swing out rotor

Shown with B3000 buckets and sealed lids B5319

| | |
|----------------------|---------------------|
| Rotor / buckets | BRK3030 |
| Tube size max | 98 x 170mm |
| Minimum speed | 500Rpm |
| Maximum speed | 4000Rpm |
| Maximum Rcf(G) | 4000 |
| Radius max | 22.5cm |
| Tube angle | 0 degree |
| Acceleration time | 45 seconds |
| Deceleration time | 45 seconds |
| Autoclavable (times) | 121C (20) |
| Minimum Temperature | 4C (at 23C ambient) |

B3000bucket (set 4) REQUIRED
750ml max per bucket

B5319 Sealed Lids (4)



Set of 4

Adaptors for Swing out rotors

| | Capacity | Size | To fit buckets B3000 | |
|-----------|---|--------|----------------------|-----------------|
| | | | Part No. | Tubes per rotor |
| | Tube type: Micro with cap Shape: point | | | |
| | 0.5ml | 8x20 | AM805 | 120 |
| | 1.5ml | 11x38 | AM820 | 84 |
| | 2.0ml | 11x38 | AM820 | 84 |
| | 0.2ml | 6x20 | AM802 | 168 |
| | Tube type: Plain no cap Shape: round | | | |
| | 0.4ml | 6x30 | AM804 | 168 |
| | 1ml | 6x45 | AR801 | 168 |
| | 3ml | 10x60 | AR803 | 96 |
| | 5ml | 12x75 | AR805 | 96 |
| | 6ml | 12x82 | AR805 | 96 |
| | 7ml | 12x100 | AR807 | 96 |
| | 9/10ml | 14x100 | AR809 | 84 |
| | 15ml | 17x100 | AR815 | 48 |
| | 25ml | 24x100 | AR825 | 28 |
| | 50ml | 34x100 | AR850 | 16 |
| | 100ml | 45x100 | AR8100 | 8 |
| | 150ml | 52x100 | AR8150 | 4 |
| 250ml | 62x100 | AR8250 | 4 | |
| | Tube type: Falcon with cap Shape: point | | | |
| | 15ml | 17x120 | AF815 | 48 |
| | 50ml | 29x115 | AF850 | 16 |
| | 175ml | 61x118 | AF8175 | 4 |
| | Tube type: Corning with cap* Shape: point | | | |
| | 250ml | 60x172 | AF8250 | 4 |
| | Tube type: Falcon with cap Shape: square | | | |
| | 500ml | 98x148 | AF8500 | 4 |
| | 12ml | 17x100 | AFS812 | 48 |
| | 25ml | 25x90 | AFS825 | 28 |
| | 30ml | 25x110 | AFS830 | 28 |
| | Tube type: Nalgene/Oakridge Shape: round | | | |
| | 50ml | 29x115 | AFS850 | 20 |
| | 15ml | 17x120 | AFS850 | 48 |
| | Tube type: Nalgene/Oakridge* Shape: flat | | | |
| | 10ml | 16x80 | ANO810 | 48 |
| | 30ml | 26x95 | ANO830 | 28 |
| | 50ml | 29x107 | ANO850 | 24 |
| | Tube type: Monovette Shape: square | | | |
| | 100ml | 38x106 | ANO885 | 12 |
| | Tube type: Vacutainer Shape: round | | | |
| | 250ml | 62x130 | ANO8250 | 4 |
| | 750ml | 98x153 | See K243/R | |
| | 1.1-1.4ml | 8x82 | AM8014 | 96 |
| | 2.7-3ml | 11x82 | AM803 | 76 |
| | 2.6-2.9ml | 13x81 | AM829 | 76 |
| 4.5-5ml | 11x108 | AM803 | 76 | |
| 7.5-8.2ml | 13x106 | AM879 | 76 | |
| 4.5-5ml | 15x92 | AM850 | 64 | |
| 9-10ml | 16x108 | AM890 | 64 | |
| | Tube type: Vacutainer Shape: round | | | |
| | 1.6-5ml | 13x75 | AV816 | 76 |
| | 4-7ml | 13x100 | AV850 | 76 |
| 8.5-10ml | 16x100 | AV880 | 64 | |

Swing Out Rotor - 4 Litre max



BRK3000 Swing out rotor

Shown with B4000 buckets and sealed lids B5319

| | |
|----------------------|---------------------|
| Rotor / buckets | BRK3040 |
| Tube size max | 98 x 180mm |
| Minimum speed | 500Rpm |
| Maximum speed | 4000Rpm |
| Maximum Rcf(G) | 4500 |
| Radius max | 25.5cm |
| Tube angle | 0 degree |
| Acceleration time | 45 seconds |
| Deceleration time | 45 seconds |
| Autoclavable (times) | 121C (20) |
| Minimum Temperature | 4C (at 23C ambient) |

B4000 bucket (set 4) REQUIRED
1000ml max per bucket

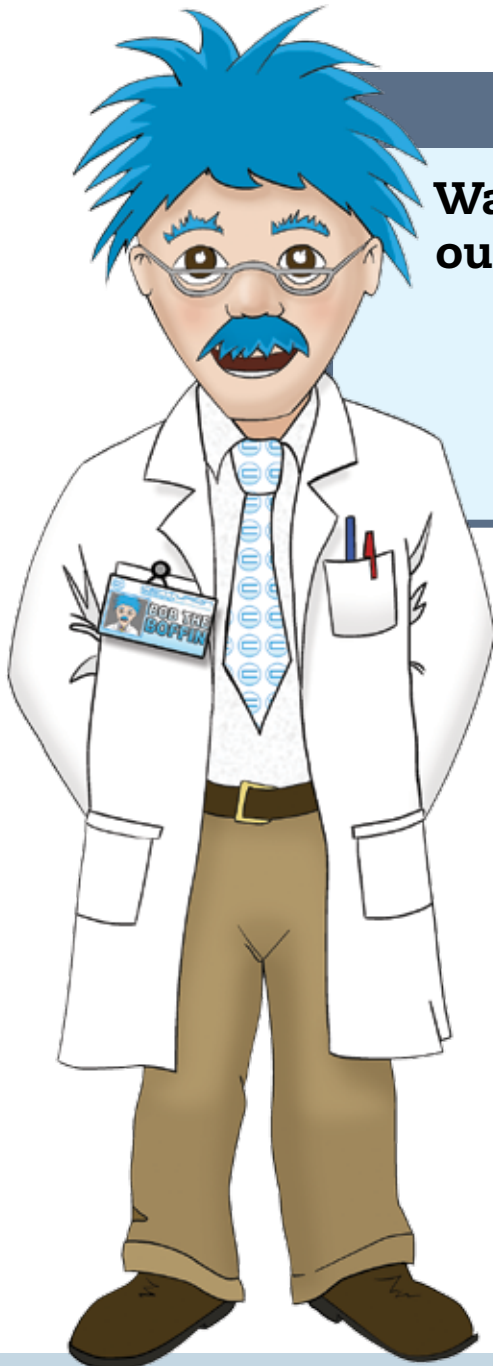
B5319 Sealed Lids (4)



Set of 4

Adaptors for Swing out rotors

| | Capacity | Size | To fit buckets B4000 | |
|-------|--|--------|----------------------|-----------------|
| | | | Part No. | Tubes per rotor |
| | Tube type: Micro with cap Shape: point | | | |
| | 0.5ml | 8x20 | AM805 | 120 |
| | 1.5ml | 11x38 | AM820 | 84 |
| | 2.0ml | 11x38 | AM820 | 84 |
| | 0.2ml | 6x20 | AM802 | 168 |
| | 0.4ml | 6x30 | AM805 | 168 |
| | Tube type: Plain no cap Shape: round | | | |
| | 1ml | 6x45 | AR801 | 168 |
| | 3ml | 10x60 | AR803 | 96 |
| | 5ml | 12x75 | AR805 | 96 |
| | 6ml | 12x82 | AR805 | 96 |
| | 7ml | 12x100 | AR807 | 96 |
| | 9/10ml | 14x100 | AR809 | 84 |
| | 15ml | 17x100 | AR815 | 48 |
| | 25ml | 24x100 | AR825 | 28 |
| | 50ml | 34x100 | AR850 | 16 |
| | 100ml | 45x100 | AR8100 | 8 |
| | 150ml | 52x100 | AR8150 | 4 |
| 250ml | 62x100 | AR8250 | 4 | |
| | Tube type: Falcon with cap Shape: point | | | |
| | 15ml | 17x120 | AF815 | 48 |
| | 50ml | 29x115 | AF850 | 16 |
| | 175ml | 61x118 | AF8175 | 4 |
| | Tube type: Corning with cap* Shape: point | | | |
| | 250ml | 60x172 | AF8250 | 4 |
| | 500ml | 98x148 | AF8500 | 4 |
| | Tube type: Falcon with cap Shape: square | | | |
| | 12ml | 17x100 | AFS812 | 48 |
| | 25ml | 25x90 | AFS825 | 28 |
| | 30ml | 25x110 | AFS830 | 28 |
| | 50ml | 29x115 | AFS850 | 20 |
| | 15ml | 17x120 | AFS850 | 48 |
| | Tube type: Nalgene/Oakridge Shape: round | | | |
| | 10ml | 16x80 | ANO810 | 48 |
| | 30ml | 26x95 | ANO830 | 28 |
| | 50ml | 29x107 | ANO850 | 24 |
| | 100ml | 38x106 | ANO885 | 12 |
| | Tube type: Nalgene/Oakridge* Shape: flat | | | |
| | 250ml | 62x130 | ANO8250 | 4 |
| | 750ml | 98x153 | ANO8750 | 4 |
| | Tube type: Monovette Shape: square | | | |
| | 1.1-1.4ml | 8x82 | AM8014 | 96 |
| | 2.7-3ml | 11x82 | AM803 | 76 |
| | 2.6-2.9ml | 13x81 | AM829 | 76 |
| | 4.5-5ml | 11x108 | AM803 | 76 |
| | 7.5-8.2ml | 13x106 | AM879 | 76 |
| | 4.5-5ml | 15x92 | AM850 | 64 |
| | 9-10ml | 16x108 | AM890 | 64 |
| | Tube type: Vacutainer Shape: round | | | |
| | 1.6-5ml | 13x75 | AV816 | 76 |
| | 4-7ml | 13x100 | AV850 | 76 |
| | 8.5-10ml | 16x100 | AV880 | 64 |



R&D Team

**Watch this space for
our Blood Bag Rotor.
Release date:
mid/late 2016!**

CENTURION
SCIENTIFIC LIMITED

Microtiter Plate Rotor 4 x Standard or 2 x High Plates



| Rotor | BRK5540 |
|--------------------------|-----------------------|
| Buckets | Complete with buckets |
| Sealed Lids | Available with |
| Rotor type | 4 x STD Plates |
| Tube size max | 85mm x 128mm |
| Minimum Speed Rpm | 500 Rpm |
| Maximum Speed Rpm | 3500 Rpm |
| Maximum Rcf (G) | 2500 |
| Radius max cms | 14 |
| Sample tube angle (°) | 0 °C (10) |
| Acceleration time (secs) | 30 |
| Deceleration time (secs) | 30 |
| Autoclavable (frequency) | 121°C (20) |

Large Fixed Angle Rotors 6,000 Rpm



| Rotor | BRK5324 | BRK5308 | BRK5100 |
|--------------------------|------------|------------|------------|
| Rotor type | 24 x 15ml | 8 x 50ml | 6 x 100ml |
| Size max | 17 x 120mm | 30 x 120mm | 45 x 125mm |
| Minimum speed Rpm | 500 | 500 | 500 |
| Maximum speed Rpm | 6,000 | 6,000 | 6,000 |
| Maximum Rcf (G) | 4,800 | 4,800 | 4,800 |
| Radius max cms | 12 | 12 | 12 |
| Sample tube angle ° | 30 | 30 | 30 |
| Acceleration time (secs) | 35 | 35 | 35 |
| Deceleration time (secs) | 35 | 35 | 35 |
| Autoclavable (frequency) | 121°C (20) | 121°C (20) | 121°C (20) |

Refrigerated Centrifuges Only

| | | | |
|---|-----|-----|-----|
| Minimum Temperature | 4°C | 4°C | 4°C |
| At maximum speed (relative to room temperature at 23°C) | | | |

Reducers



| Rotor | BRK5324 | BRK5308 | BRK5100 |
|---------------|-------------|-------------|-------------|
| Part number | RM05 (5ml) | RM15 (15ml) | RL10 (10ml) |
| Tube size max | 13 x 80mm | 17 x 120mm | 16 x 100mm |
| Part number | RM10 (10ml) | RM25 (25ml) | RL25 (25ml) |
| Tube size max | 13 x 100mm | 25 x 100mm | 25 x 100mm |
| | | | RL50 (50ml) |
| | | | 35 x 110mm |
| | | | RL85 (85ml) |
| | | | 39 x 110mm |

High Speed Fixed Angle Rotors 10,000 Rpm



| Rotor | BRK5224 | BRK5208 | BRK5210 | BRK5256 |
|--------------------------|------------|------------|------------|------------|
| Rotor type | 24 x 15ml | 8 x 50ml | 6 x 100ml | 6 x 250ml |
| Size max | 17 x 120mm | 30 x 120mm | 45 x 125mm | 62 x 130mm |
| Minimum speed Rpm | 500 | 500 | 500 | 500 |
| Maximum speed Rpm | 10,000 | 10,000 | 10,000 | 10,000 |
| Maximum Rcf (G) | 13,400 | 13,400 | 13,400 | 15,650 |
| Radius max cms | 12 | 12 | 12 | 14 |
| Sample tube angle ° | 30 | 30 | 30 | 30 |
| Acceleration time (secs) | 40 | 45 | 45 | 60 |
| Deceleration time (secs) | 40 | 45 | 45 | 85 |
| Autoclavable (frequency) | 121°C (20) | 121°C (20) | 121°C (20) | 121°C (20) |

Refrigerated Centrifuges Only

| | | | | |
|---|-----|-----|-----|-----|
| Minimum Temperature | 4°C | 4°C | 4°C | 4°C |
| At maximum speed (relative to room temperature at 23°C) | | | | |

Reducers



| Rotor | BRK5224 | BRK5208 | BRK5210 | BRK5256 |
|---------------|-------------|-------------|-------------|---------------|
| Part number | RM05 (5ml) | RM15 (15ml) | RL10 (10ml) | RX10 (10ml) |
| Tube size max | 13 x 80mm | 17 x 120mm | 16 x 100mm | 16 x 100mm |
| Part number | RM10 (10ml) | RM25 (25ml) | RL25 (25ml) | RX25 (25ml) |
| Tube size max | 13 x 100mm | 25 x 100mm | 25 x 100mm | 25 x 100mm |
| | | | RL50 (50ml) | RX50 (50ml) |
| | | | 35 x 110mm | 35 x 110mm |
| | | | RL85 (85ml) | RX85 (85ml) |
| | | | 39 x 110mm | 39 x 110mm |
| | | | | RX100 (100ml) |
| | | | | 48 x 110mm |
| | | | | RX175 (175ml) |
| | | | | 62 x 121mm |

Microtube Rotors 15,000 Rpm



With NEW high Domed polycarbonate lid



| Rotor | BRK5424 | BRK5436 | BRK5448 | BRK5494 |
|--------------------------|------------|------------|------------|----------------|
| Rotor type | 24 x 2ml | 36 x 0.5ml | 48 x 0.2ml | 4 x PCR Strips |
| Tube size max | 11 x 50mm | 8 x 30mm | 6 x 40mm | 6 x 40mm |
| Minimum Speed Rpm | 500 | 500 | 500 | 500 |
| Maximum Speed Rpm | 15,000 | 15,000 | 15,000 | 15,000 |
| Maximum Rcf (G) | 22,000 | 22,000 | 22,000 | 22,000 |
| Radius max cms | 8.5 | 8.5 | 8.5 | 8.5 |
| Sample tube angle (°) | 45 | 45 | 45 | 45 |
| Acceleration time (secs) | 25 | 25 | 25 | 25 |
| Deceleration time (secs) | 25 | 25 | 25 | 25 |
| Autoclavable (frequency) | 121°C (10) | 121°C (10) | 121°C (10) | 121°C (10) |

Refrigerated Centrifuges Only

| | | | | |
|---|-----|-----|-----|-----|
| Minimum Temperature | 4°C | 4°C | 4°C | 4°C |
| At maximum speed (relative to room temperature at 23°C) | | | | |

Reducers

(Pack of 24)



| Rotor | BRK5424 |
|---------------|--------------------|
| Part number | RS04 (0.2 - 0.4ml) |
| Tube size max | 6 x 30mm |
| Part number | RS05 (0.5ml) |
| Tube size max | 8 x 30mm |

Haematocrit Rotor 12,000 Rpm



| Rotor | BRK5401 |
|--------------------------|---------------------------|
| Rotor type | 24 x capillary & 12 x 2ml |
| Tube size max | 2 x 75mm & 11 x 40mm |
| Minimum Speed Rpm | 500 |
| Maximum Speed Rpm | 12,000 |
| Maximum Rcf (G) | 13,500 |
| Radius max cms | 8.5 |
| Sample tube angle (°) | 0 & 60 |
| Acceleration time (secs) | 30 |
| Deceleration time (secs) | 30 |
| Autoclavable (frequency) | 121°C (10) |



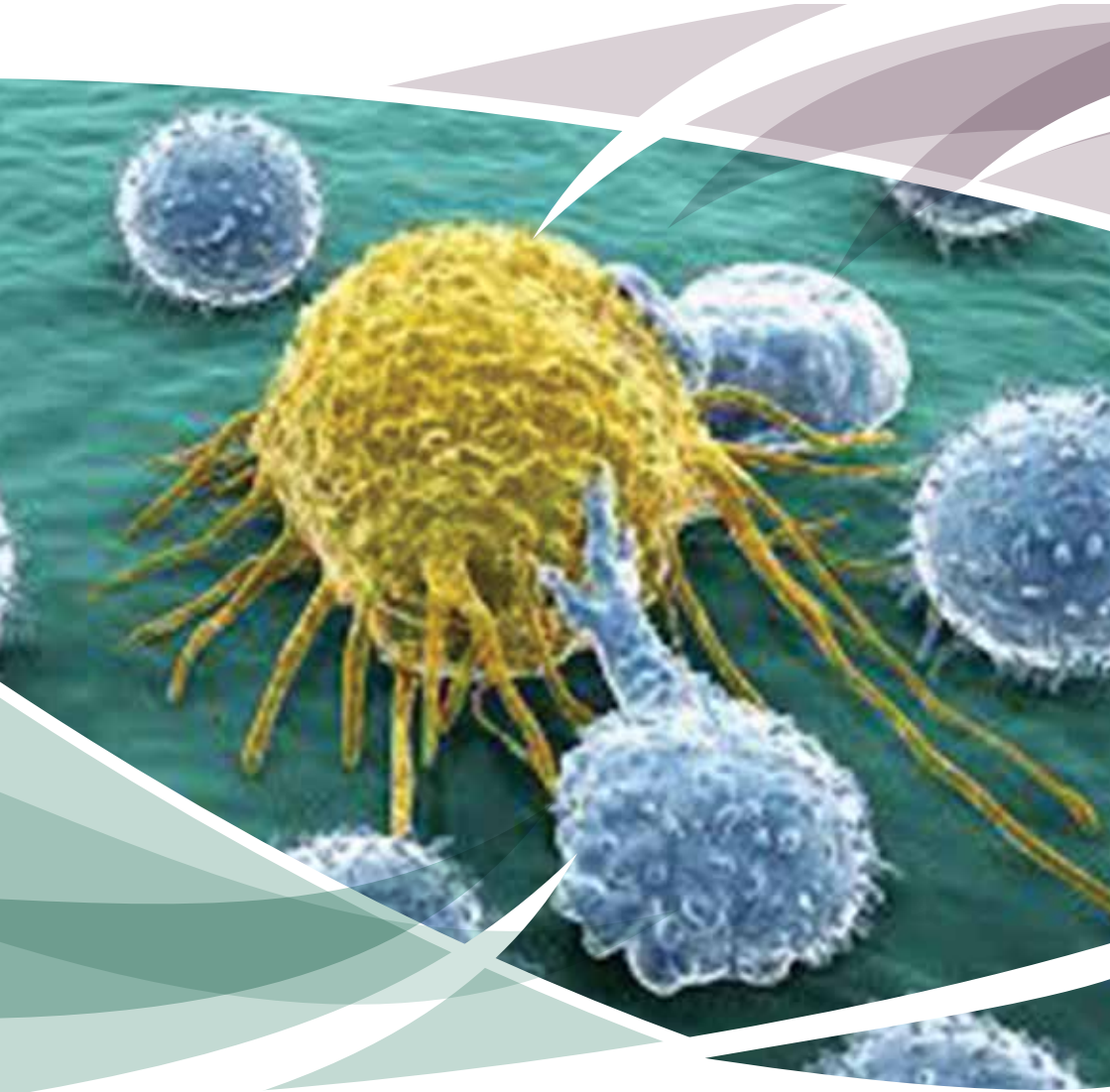
Incorporated into the hospital arena please see our cytology & cell washer ranges in the following sections.

For information on our full range please visit:

www.centurionscientificglobal.com

PrO-Cyt Centrifuges

Cytology Histology





Our PrO-Cyt range are compact and practical centrifuges for small , medium and large sample volumes. Unlike others we offer you a choice of two Centrifuges and each can use one of three rotors, from 4, 8 and 12 places, thus meeting your needs exactly.

They are both cost effective, yet still benefiting from the superb build quality and engineering of our research series.

Centurion centrifuges, with their applications-oriented accessories, are proven favourites in clinical, cytology , histology and small medical laboratories Our compact, ergonomic design: smaller dimensions, ergonomic height and curved features ensure a comfortable and efficient workspace. Our Centrifuges deliver optimum performance in compact units, designed for ease of use. Quiet (below 50Db, rotor dependant) with low heat operation noise levels have been reduced while maintaining sample integrity with good airflow .

Performance and safety are top of our agenda, tight operational control is maintained by the microprocessor. An imbalance sensor is incorporated into the control loop to bring to a controlled stop of the centrifuge in the case of a tube rupture or incorrect loading.

Centurion centrifuges have been an industry standard for quality and reliability for 27 years, our centrifuges can be relied upon to deliver safe, reproducible and trouble-free results for many years.

Warranty 3 years for all models

Centurion brand centrifugation products are part of a dedicated range of products and services designed to provide you with quality equipment and support.

Choosing The Right Centrifuge

A centrifuge is a critical piece of equipment. Therefore, when the time comes to add new centrifuges or replace old models, it is important to make an informed decision. Bringing together technological and design excellence, Centurion have paved the way for a new generation of centrifuges.

We reserve the right to make changes with ongoing research and development.

PrO-Cyt Centrifuges

| User features to PrO-CYT series | Advantages |
|--|---------------------------------------|
| Large LCD display with touch control or LED | Clarity & ease of use |
| 10 accelerations rates & 10 deceleration rates | Sample assistance |
| 108 memory (12 pages of 9) or LED (10) | Multi department & Users |
| Timer 0-99 minutes & Hold in 1/30 second increments | Total flexibility |
| Pulse short run | Fast pelleting |
| Run in speed (rpm) or rcf (G) in 1/10 rpm increments | Accuracy |
| Sound <55db (rotor dependent) | Quiet |
| Orientation acceleration rate | Prevents initial sample side deposits |

| Standard to PrO-CYT series | Advantages |
|---|--------------------------------|
| Extra thick stainless steel bowl | Easy clean & rust free |
| Port to lid | Tachometer speed certification |
| Alloy & steel frame (zinc coated) | Strong light & quiet |
| World leading industrial grade inverter | Reliability & strength |
| Best quality European brushless motor | Quiet, cool & reliable |
| High technology airflow (ambient mode) | Cooler running |
| All centrifuges have user accessible service sections to access all safety parameters | |

| Safety features to PrO-CYT series | Advantages |
|-----------------------------------|-----------------------------------|
| Multi point lid locking | Lid safety |
| Emergency lid release | Power failure release |
| Lid Spring Strut | Lid dropping safety |
| Lid lock detection | To run, lid must be shut |
| Imbalance detection | Eradicates user loading errors |
| Overspeed sensor | Safe detection of speed |
| Set inverter values | Electronic safety of speed |
| Barrier ring | Extra metal protection of chamber |
| Motor overheat sensor | Safe motor protection |

Centurion Scientific Ltd centrifuges comply to all relevant EU standards for Quality and medical Devices IEC 61010 and CE conformity test marks Emission, immunity to EN/IEC 61326-1, Class B

Page 62 PrO-Cyt LED and PrO-Cyt LCD Centrifuges

Page 63 Rotors available. 4 place, 8 place and 12 place

Page 64 Sample holders available, single, double or single large.

Page 64 Package supplied and other available items

PrO Cyt LED

(230V 50/60Hz)



Display indicative only

1.PrO Cyt LED

110V 60Hz

(Rotor required)

| | |
|-------------|------------------------------------|
| Speed | 200-2000 Rpm (10 Rpm steps) |
| Rcf Max | 550 G |
| Timer | 0-99 Mins & Hold (30 sec steps) |
| Dims HWD | 275 x 325 x 470mm |
| Weight | 21.8 Kg (without rotor) |
| Power | 175 Watts |
| Memory | 10 programs |
| Accel rates | 10 programs |
| Decel rates | 10 programs |

PrO Cyt LCD

(230V 50/60Hz)



Display indicative only

1.PrO Cyt LCD

(110V 60Hz)

(Rotor required)

| | |
|-------------|-------------------------------------|
| Speed | 200-2000 Rpm (1 Rpm steps) |
| Rcf Max | 550 G |
| Timer | 0-9999 Mins & Hold (1 sec steps) |
| Dims HWD | 275 x 325 x 470mm |
| Weight | 21.8 Kg (without rotor) |
| Power | 175 Watts |
| Memory | 108 programs |
| Accel rates | 10 programs |
| Decel rates | 10 programs |

Available Cytology Rotors

Using centrifugal force to separate and deposit a monolayer of cells onto slides whilst maintaining cellular integrity within a clearly defined area FROM ANY FLUID MATRIX.

Cyto centrifugation also constructively flattens cells for excellent nuclear presentation.

Applications include Cytology, Histology, Haematology, Oncology, Immunochemistry, Virology, Serology and Microbiology.

Offering samples from 0.1ml to 6ml and an extensive range of accessories we have your Cytology needs covered.

Cytology rotor includes Rotor, sealed lid, Clips, 24 x holders with filter card & 100 slides

| Rotor | 4420 |
|--------------------------|------------|
| Rotor type (ml) | 4 x double |
| Tube size max (mm) | STD slide |
| Minimum speed (Rpm) | 200 |
| Maximum speed (Rpm) | 2,000 |
| Maximum RCF (G) | 550 |
| Radius max (mm) | 123 |
| Sample tube angle (°) | vertical |
| Acceleration time (secs) | 15-90 |
| Deceleration time (secs) | 15-90 |
| Autoclavable (frequency) | 121°C (20) |

| Rotor | 4430 |
|--------------------------|------------|
| Rotor type (ml) | 8 x double |
| Tube size max (mm) | STD slide |
| Minimum speed (Rpm) | 200 |
| Maximum speed (Rpm) | 2,000 |
| Maximum RCF (G) | 550 |
| Radius max (mm) | 123 |
| Sample tube angle (°) | Vertical |
| Acceleration time (secs) | 15-90 |
| Deceleration time (secs) | 15-90 |
| Autoclavable (frequency) | 121°C (20) |



| Rotor | 4460 |
|--------------------------|-------------|
| Rotor type (ml) | 12 x double |
| Tube size max (mm) | STD slide |
| Minimum speed (Rpm) | 200 |
| Maximum speed (Rpm) | 2,000 |
| Maximum RCF (G) | 550 |
| Radius max (mm) | 123 |
| Sample tube angle (°) | Vertical |
| Acceleration time (secs) | 15-90 |
| Deceleration time (secs) | 15-90 |
| Autoclavable (frequency) | 121°C (20) |

Accessories



Pack of 24

4444

Single sample holder with card (up to 1ml)



Pack of 24

4446

Double sample holder with card (up to 1ml)



Pack of 40

4600

Single sample holder with card (up to 6ml)



To review all of our ranges please visit:

www.centurionscientificglobal.com



Single

4462

Stainless steel clips

Accessories included

All PrO-Cyt centrifuges are complete with a starter pack this includes.

100 microscope slides and a pack of 24 double sample holders including fixed blotters.

Rotors are complete with lid , swing plate and stainless steel holders to match.

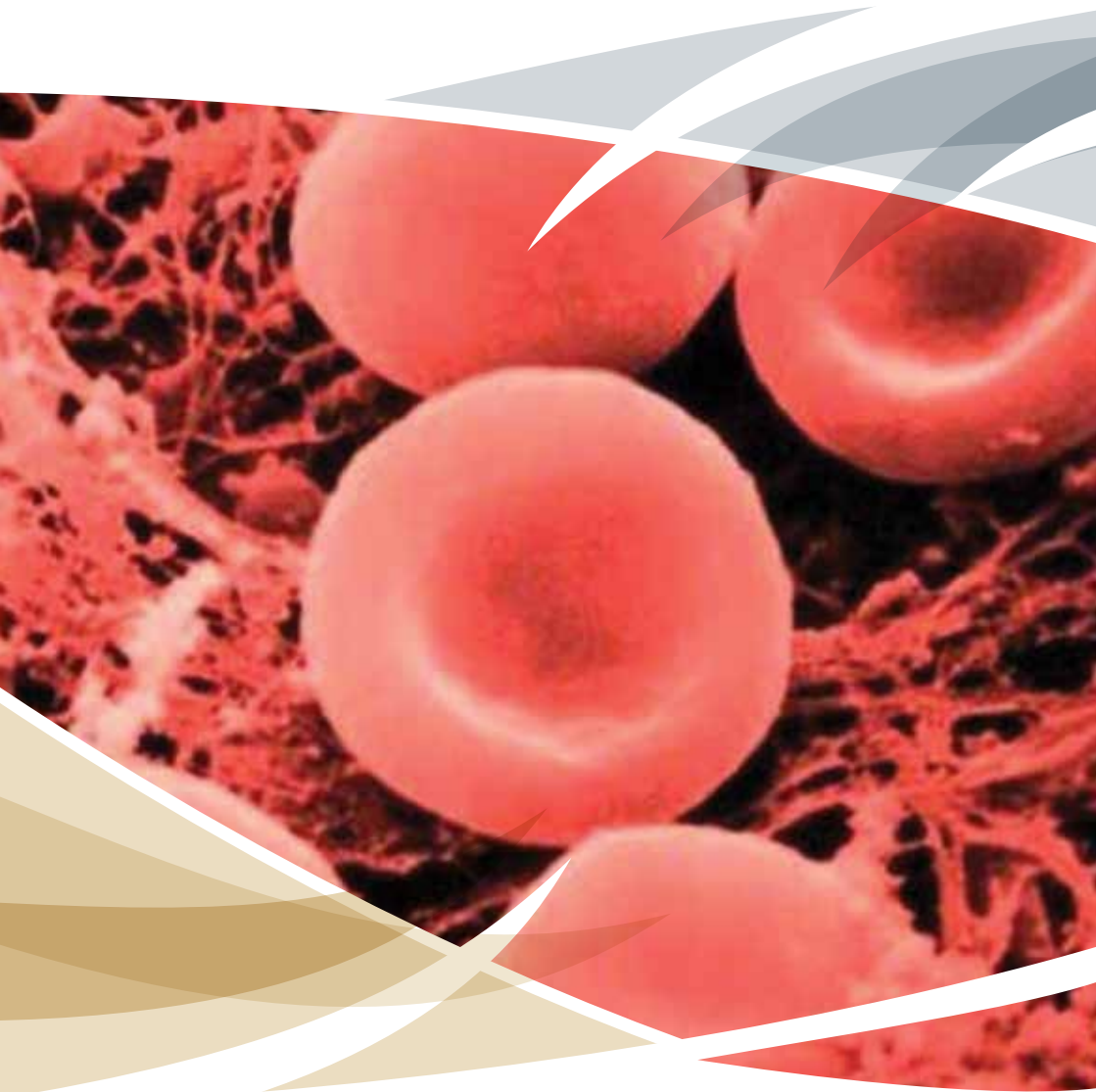


We trust that the details contained within these pages allows you to make a informative decision on our PrO-Cyt range.

If however you need more information or assistance, please do not hesitate to call.

PrO-CW

Cell washing. Coombs test





PrO-Hospital CW Cell Washing Centrifuge Complete with 12 place rotor and accessories

The Centurion Cell Washing System can simplify work & save time in the washing of blood cells for antiglobulin reagent tests.

The instrument's 12 place rotor accepts both 10 x 75mm & 12 x 75mm tubes.

Being a manual cell washing system means our users can be precise and sure of exact saline amounts administered by themselves.

These machines are perfect for performing blood groupings, blood typing, cross matching, ABO compatibility, RH testing and the Coombs test procedure.

A manual cell washing cycle includes the following steps:

- **Filling with saline solution**
- **Centrifuging at (usually) 3,500rpm for 1 minute**
- **Decanting the supernatant adaptors**
- **Resuspending the sediment between cycles**

We reserve the right to make changes with ongoing research and development.

PrO-Hospital CW with bright blue LED display

CW. (230V 50/60Hz). 1.CW. (110V 60Hz)



Display indicative only

| | |
|-----------|------------------------------------|
| Speed Max | 500 - 3500 Rpm |
| Rcf Max | 1,250G |
| Timer | 0 - 99 minutes Pulse 0 -90 Secs |
| Dims | 275 x 325 x 470mm |
| Weight | 22 Kg (without rotor) |
| Power | 180 Watts |

Features

- LED Display
- 10 acceleration rates
- 10 deceleration rates
- 10 program memory
- Run in speed or Rcf (G force)

| Standard features | Advantages |
|--|--------------------------------|
| Stainless steel bowl | Easy clean & rust free |
| Alloy & steel frame (zinc coated) | Strong light & quiet |
| World leading industrial grade inverter | Reliability & Strength |
| High quality European brushless motor | Quiet, cool & reliable |
| Full service access via coded system | Easy Servicing |
| Safety features | Advantages |
| Multi-point lid locking system containment | Best safety for lid |
| Imbalance vibration detector with auto reset | Eradicates user loading errors |
| Lid lock detector | Unable to run with an open lid |
| Overspeed sensor | Safe selection of speed |
| Set inverter values | Electronic safety of speed |
| Barrier ring | Metal protection chamber |
| Motor overheat sensor | Motor & samples protection |

Cell Washer Accessories

Please Note our Cell washing machine is supplied complete with rotor and 12 holders for each size (2)



Rotor for PrO-Hospital CW

- High quality Polypropylene
- Autoclavable

The rotor in this device can be detached and efficiently function as a holder in which test tubes can be fitted, centrifuges, transported, incubated and emptied with the necessity for individual handling.

Adaptors for PrO-Hospital CW 2 sets supplied, 12 of each size

Our adaptors enable the rotor to handle both 10 x 75mm and 12 x 75mm tubes.

This included rotor carries 12 tubes but can operate with any balanced load of fewer tubes and any combination of sizes as long as these are properly balanced.

This offers complete flexibility for the user.





To review all of our ranges
please visit:

www.centurionscientificglobal.com

Distributed by:

Manufactured by:

Centurion Scientific Ltd
Email: info@centurionscientific.co.uk

